

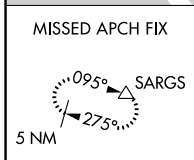
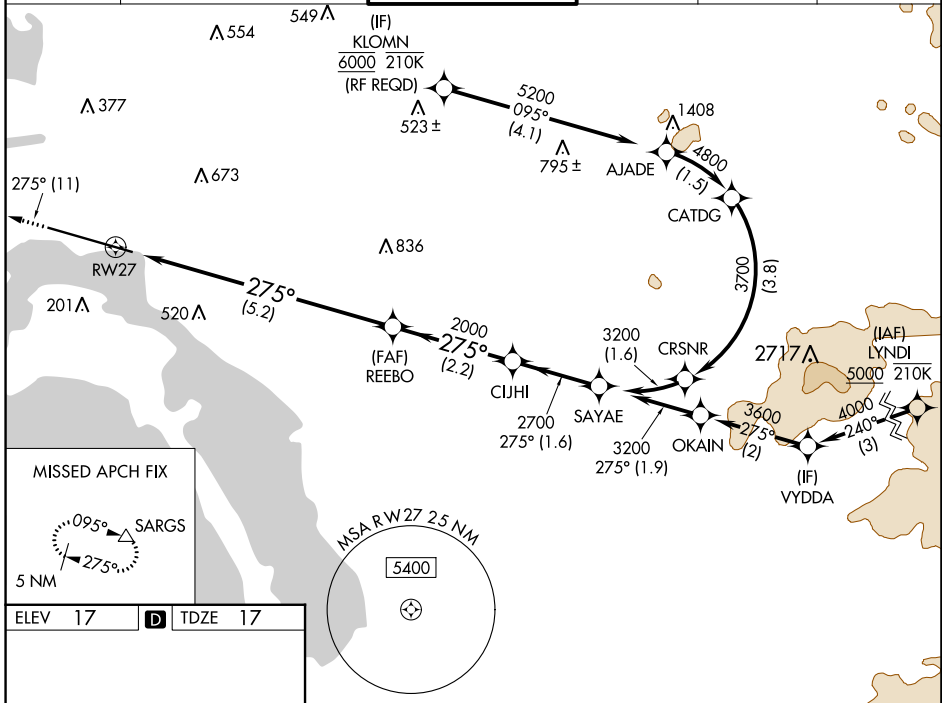
APP CRS	Rwy Idg	<b>7591</b>
<b>275°</b>	TDZE	<b>17</b>
	Apt Elev	<b>17</b>

# RNAV (RNP) Z RWY 27

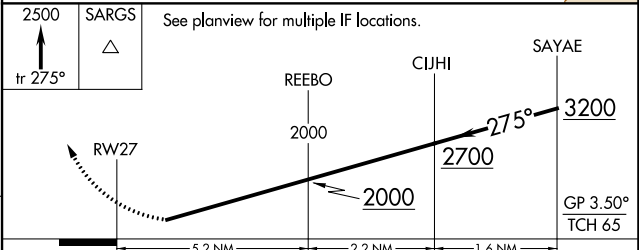
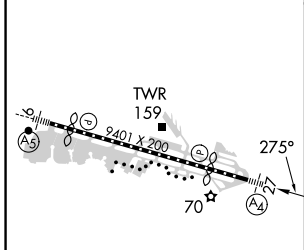
SAN DIEGO INTL (SAN)

RNP AR APCH.	MALS	MISSED APPROACH: Climb to 2500 on track 275° to SARGs and hold.
▼ For uncompensated Baro-VNAV systems, procedure NA below 6°C or above 46°C. Straight-in Rwy 27 at night, operational VGSI required, remain on or above VGSI glidepath until threshold. For inop ALS, increase RNP 0.30 all Cats visibility to 2½ SM.	(A4)	

D-ATIS	SOCAL APP CON	LINDBERGH TOWER	GND CON	CLNC DEL	CPDLC
<b>134.8</b>	<b>119.6 363.1 (WEST)</b> <b>124.35 279.625 (EAST)</b>	<b>118.3 338.225</b>	<b>123.9</b>	<b>125.9</b>	



ELEV 17	<b>D</b>	TDZE 17
---------	----------	---------



CATEGORY	A	B	C	D
RNP 0.11 DA		617-1½	600 (600-1½)	
RNP 0.30 DA		778-2	761 (800-2)	

**AUTHORIZATION REQUIRED**

SW-3, 11 JUL 2024 to 08 AUG 2024

SW-3, 11 JUL 2024 to 08 AUG 2024