

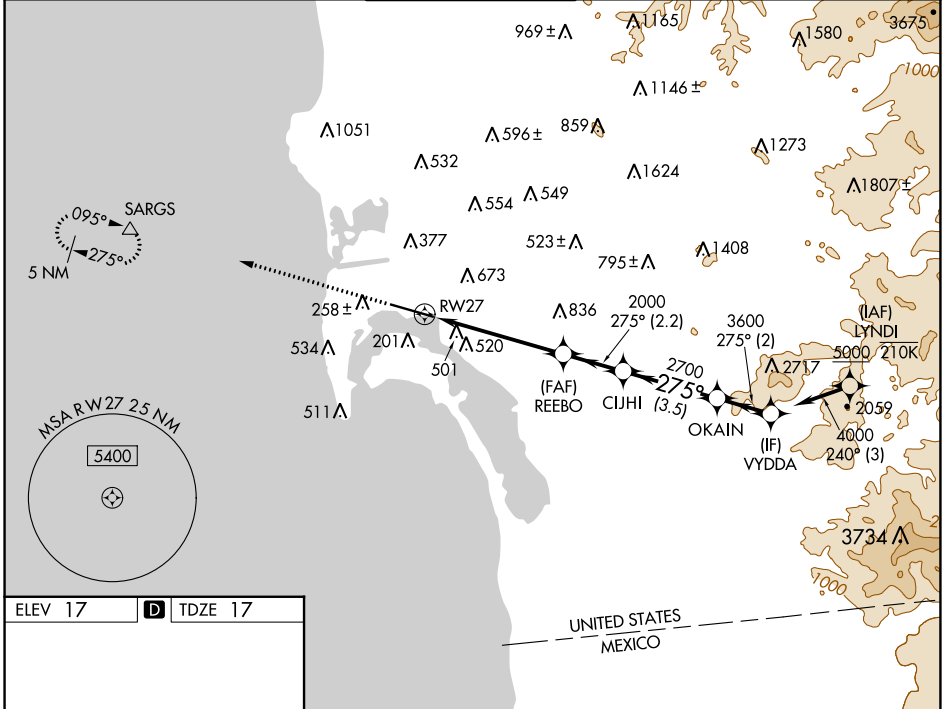
WAAS CH <b>82527</b> <b>W27A</b>	APP CRS <b>275°</b>	Rwy Idg TDZE Apt Elev	<b>7591</b> <b>17</b> <b>17</b>
--	------------------------	-----------------------------	---------------------------------------

# RNAV (GPS) Y RWY 27

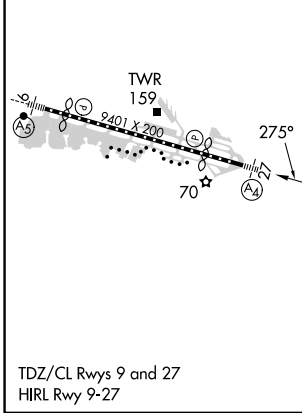
SAN DIEGO INTL (SAN)

RNP APCH.	MALS	MISSED APPROACH: Climb to 2500 direct SARGs and hold.
<p><b>▽</b> Rwy 27 helicopter visibility reduction below RVR 5000 NA. Straight-in Rwy 27 at night, operational VGSI required, remain on or above VGSI glidepath until threshold. Circling NA north of Rwy 9-27. For inop ALS, increase LNAV Cts C/D visibility to 2 SM. Inop table does not apply to LP Cts A/B and LNAV Cat A.</p>		

D-ATIS <b>134.8</b>	SOCAL APP CON <b>119.6 363.1</b> (WEST) <b>124.35 279.625</b> (EAST)	LINDBERGH TOWER <b>118.3 338.225</b>	GND CON <b>123.9</b>	CLNC DEL <b>125.9</b>	CPDLC
------------------------	--	---	-------------------------	--------------------------	-------



ELEV 17	<b>D</b>	TDZE 17
---------	----------	---------



	2500	SARGs		VYDDA
	↑	△		
			REEBO	OKAIN
			2000	4000
			2700	3600
			5.2 NM	2.2 NM
			3.5 NM	2 NM
CATEGORY	A	B	C	D
LP MDA	680/50	663 (700-1)	680-1¾	663 (700-1¾)
LNAV MDA	760/50 743 (800-1)	760/55 743 (800-1)	760-1⅞	743 (800-1⅞)
<b>C</b> CIRCLING	820-1 803 (900-1)	820-1¼ 803 (900-1¼)	820-2½ 803 (900-2½)	940-3 923 (1000-3)

SW-3, 11 JUL 2024 to 08 AUG 2024

SW-3, 11 JUL 2024 to 08 AUG 2024