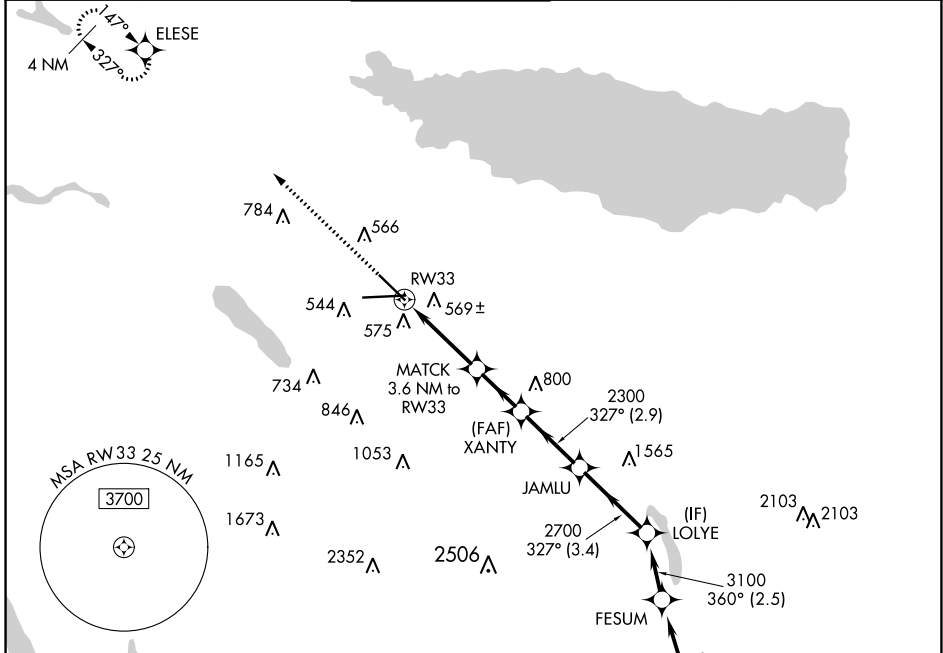


WAAS CH 81823 W33A	APP CRS 327°	Rwy Idg TDZE Apt Elev	7500 409 421
--	------------------------	-----------------------------	---

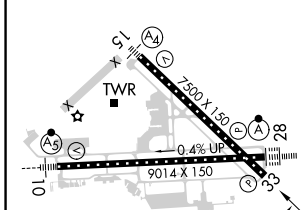
RNAV (GPS) RWY 33

SYRACUSE HANCOCK INTL (SYR)

RNP APCH.		SYRACUSE TOWER 120.3 239.0		GND CON 121.7 348.6	CLNC DEL 125.05 257.775
▼ Rwy 33 helicopter visibility reduction below 3/4 SM NA. For uncompensated ▲ Baro-VNAV systems, LNAV/VNAV NA below -20°C or above 54°C.				MISSED APPROACH: Climb to 3000 direct ELESE and hold.	
ATIS 124.225	SYRACUSE APP CON 126.125 269.125				



ELEV 421	D	TDZE 409
----------	----------	----------



3000	ELESE	MATCH	XANTY	JAMLU	LOLYE
↑	◆	◆	◆	◆	◆
		3.6 NM to RWY33	2300	2700	3100
			◆	◆	◆
		1.1 NM to RWY33	2300	2700	3100
			◆	◆	◆
			1580*	2300	3100
			◆	◆	◆
					GP 3.00° TCH 50
		1.1 NM	2.5 NM	2.2 NM	2.9 NM
				3.4 NM	

CATEGORY	A	B	C	D
LPV DA		715/45	306 (300-7/8)	
LNAV/VNAV DA		882-1 3/8	473 (500-1 3/8)	
LNAV MDA	820/55	411 (400-1)	820/60	411 (400-1 1/4)
<input checked="" type="checkbox"/> CIRCLING	900-1 479 (500-1)	920-1 499 (500-1)	1020-1 1/2 599 (600-1 1/2)	1180-2 1/2 759 (800-2 1/2)

SYRACUSE, NEW YORK
HIRL Rwy 10-28 and 15-33
Amdt 2 30JAN20

43°07'N-76°06'W

SYRACUSE HANCOCK INTL (SYR)
RNAV (GPS) RWY 33

NE-2, 11 JUL 2024 to 08 AUG 2024

NE-2, 11 JUL 2024 to 08 AUG 2024