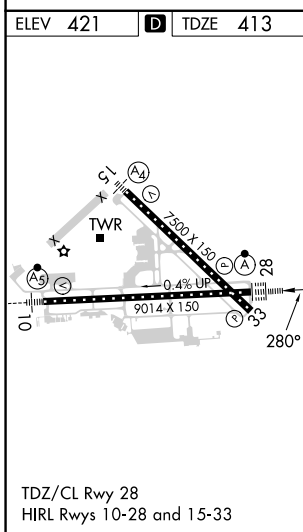
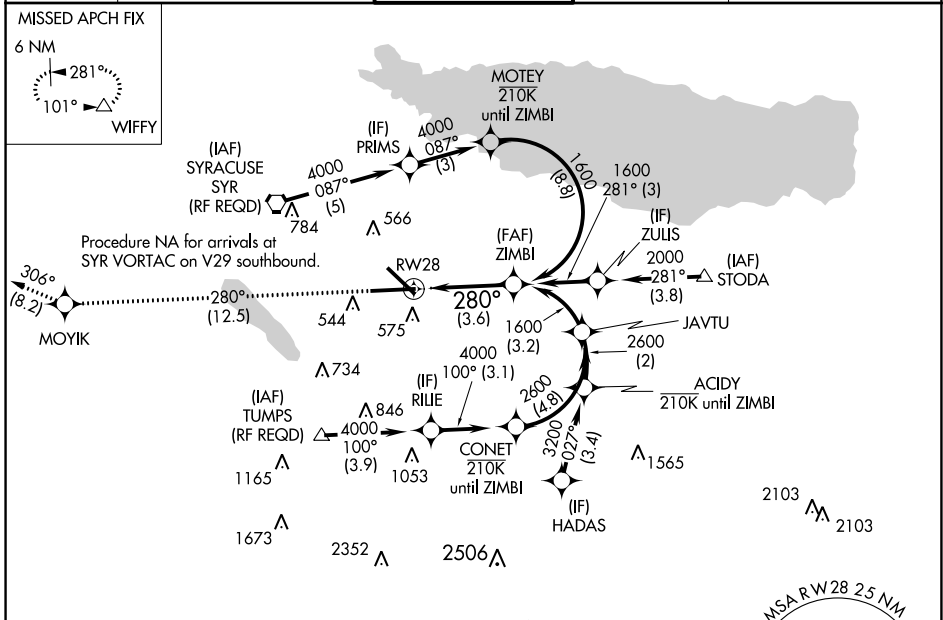


APP CRS	Rwy Idg	9014
280°	TDZE	413
	Apt Elev	421

RNAV (RNP) Y RWY 28

SYRACUSE HANCOCK INTL (SYR)

RNP AR APCH		ALSIF-2	MISSED APPROACH: Climb to 3000 on track 280° to MOYIK and on track 306° to WIFFY and hold.	
<p>▼ For uncompensated Baro-VNAV systems, procedure NA below -18°C or above 54°C. For inop ALS, increase RNP 0.15 all Cats visibility to 1½. For inop ALS, increase RNP 0.30 all Cats visibility to 1%.</p>				
ATIS	SYRACUSE APP CON	SYRACUSE TOWER	GND CON	CLNC DEL
124.225	126.125 269.125	120.3 239.0	121.7 348.6	125.05 257.775



3000	MOYIK	WIFFY	See planview for multiple IF locations.	ZIMBI
tr 280°		tr 306°		
RW28		3.6 NM		GP 3.00° TCH 60
CATEGORY	A	B	C	D
RNP 0.15 DA		862/55	449 (500-1)	
RNP 0.30 DA		957-1½	544 (600-1%)	
AUTHORIZATION REQUIRED				

NE-2, 11 JUL 2024 to 08 AUG 2024

NE-2, 11 JUL 2024 to 08 AUG 2024