

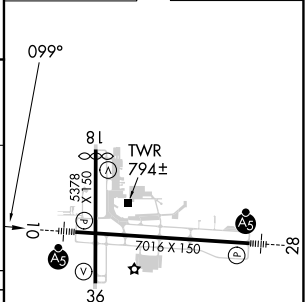
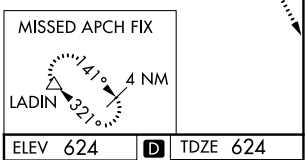
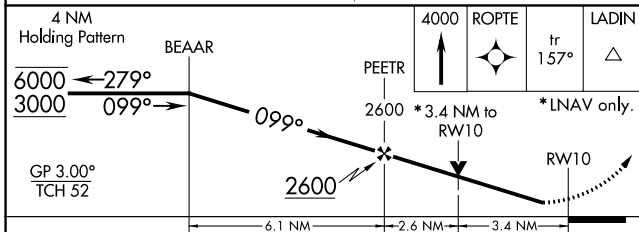
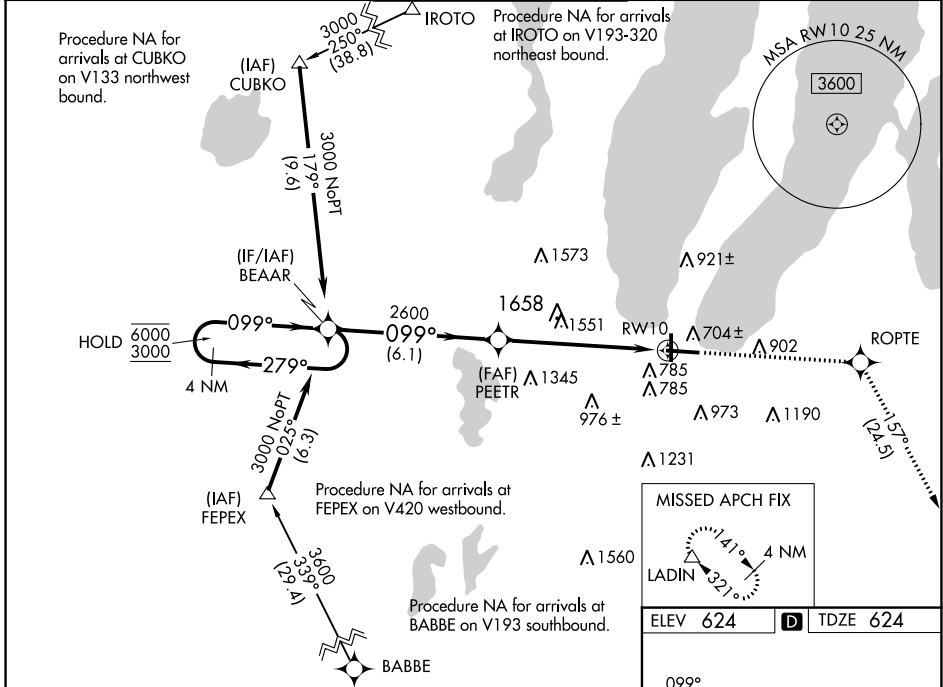
WAAS CH <b>42610</b> <b>W10A</b>	APP CRS <b>099°</b>	Rwy Idg <b>7016</b> TDZE <b>624</b> Apt Elev <b>624</b>
--	------------------------	---

# RNAV (GPS) RWY 10

CHERRY CAPITAL (TVC)

RNP APCH.	MALSRL AS	MISSED APPROACH: Climb to 4000 direct ROPTe and on track 157° to LADIN and hold.
<p>For uncompensated Baro-VNAV systems, LNAV/VNAV NA below -19°C (-2°F) or above 54°C (130°F). Rwy 10 helicopter visibility reduction below 3/4 SM NA. For inop ALS, increase LPV visibility all Cats 1/2 SM. Inop table does not apply to LNAV/VNAV all Cats and LNAV Cats C/D.</p>		

ATIS <b>119.175</b>	MINNEAPOLIS CENTER <b>132.9 338.3</b>	TRAVERSE CITY TOWER* <b>124.2 (CTAF) 0 348.6</b>	GND CON <b>121.8 348.6</b>	UNICOM <b>122.95</b>
------------------------	--	---	-------------------------------	-------------------------



CATEGORY	A	B	C	D
LPV DA	909-3/4		285 (300-3/4)	
LNAV/VNAV DA	1983-5		1359 (1400-5)	
LNAV MDA	1780-3/4 1156 (1200-3/4)	1780-1 1156 (1200-1)	1780-3	1156 (1200-3)
CIRCLING	1780-1 1/4 1156 (1200-1 1/4)	1780-1 1/2 1156 (1200-1 1/2)	1780-3	1156 (1200-3)

HIRL Rwy 10-28  
MIRL Rwy 18-36  
REIL Rwy 36

EC-1, 11 JUL 2024 to 08 AUG 2024

EC-1, 11 JUL 2024 to 08 AUG 2024