

TIKEE FOUR ARRIVAL (RNAV)

WASHINGTON, DC

NE-3, 11 JUL 2024 to 08 AUG 2024

RNAV 1- DME/DME/IRU or GPS.
RADAR required.

POTOMAC APP CON
120.45 306.925
DCA D-ATIS
132.65
ADW D-ATIS
133.675 251.05
*DAA ATIS
128.175

ARRIVAL ROUTE DESCRIPTION

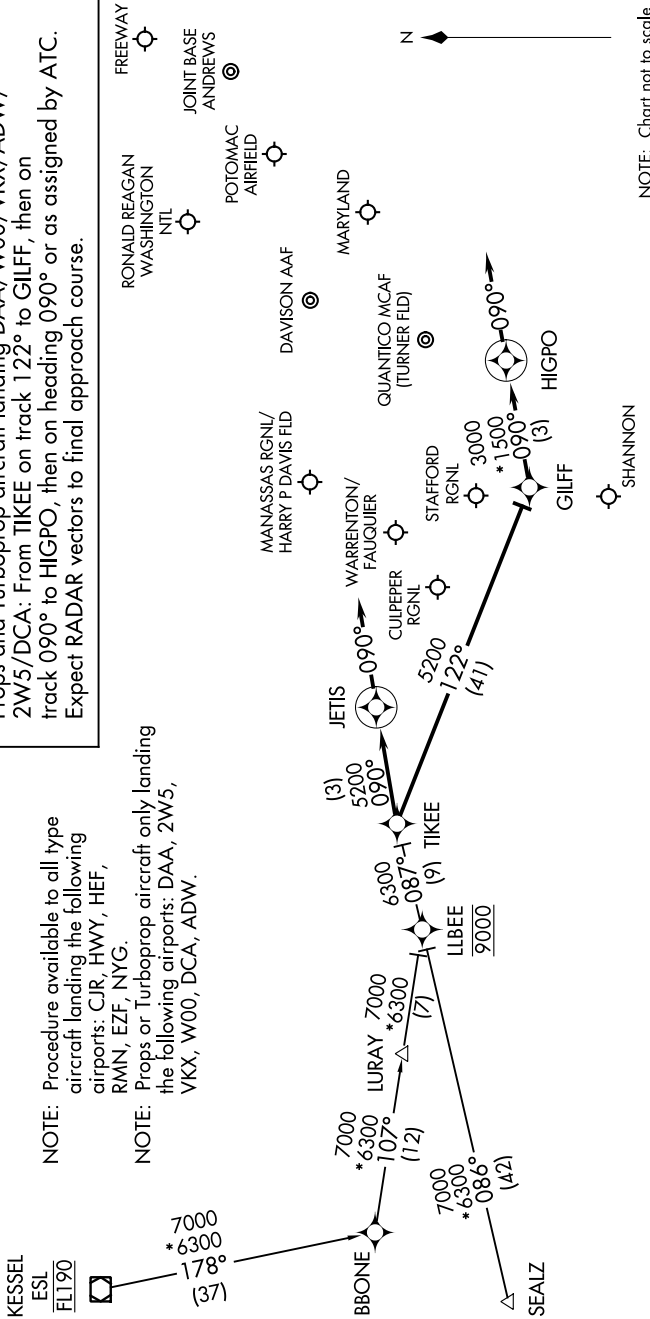
BBONE TRANSITION (BBONE.TIKEE4):
KESSEL TRANSITION (ESL.TIKEE4):
SEALZ TRANSITION (SEALZ.TIKEE4):

All aircraft types landing HEF/NYG/RMN/HWY/CJR/EZF:
 From TIKEE on track 090° to JETIS, then on heading 090° or as assigned by ATC. Expect RADAR vectors to final approach course.

Props and Turboprop aircraft landing DAA/W00/VKX/ADW/
 2W5/DCA: From TIKEE on track 122° to GILFF, then on
 track 090° to HIGPO, then on heading 090° or as assigned by ATC.
 Expect RADAR vectors to final approach course.

NOTE: Procedure available to all type
 aircraft landing the following
 airports: CJR, HWY, HEF,
 RMN, EZF, NYG.

NOTE: Props or Turboprop aircraft only landing
 the following airports: DAA, 2W5,
 VKX, W00, DCA, ADW.



NOTE: Chart not to scale

TIKEE FOUR ARRIVAL (RNAV)

WASHINGTON, DC

NE-3, 11 JUL 2024 to 08 AUG 2024