

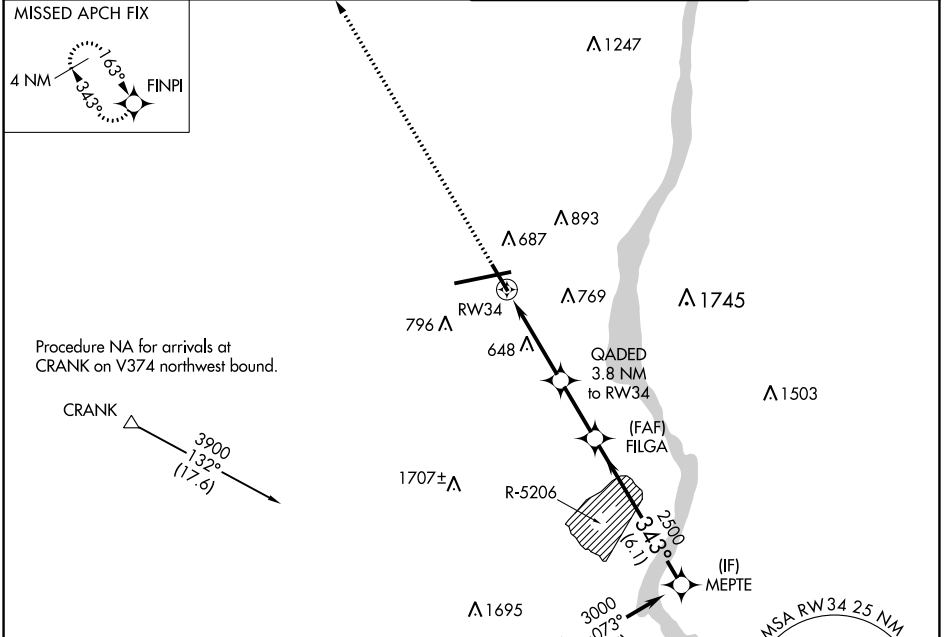
WAAS CH 90217 W34A	APP CRS 343°	Rwy Idg TDZE 462 Apt Elev 491	6004 462 491
--	------------------------	---	---

RNAV (GPS) RWY 34

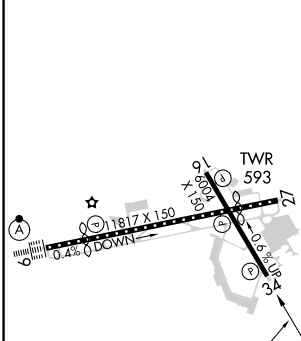
NEW YORK STEWART INTL (SWF)

RNP APCH - GPS.	MISSED APPROACH: Climb to 3900 direct FINPI and hold.
Procedure NA when restricted area R-5206 is active.	

ATIS 124.575	NEW YORK APP CON 132.75 363.1	STEWART TOWER 121.0 254.4	GND CON 121.9
------------------------	---	-------------------------------------	-------------------------



ELEV 491	D	TDZE 462
----------	----------	----------



TDZ/CL Rwy 9 HIRL Rws 9-27 and 16-34 REIL Rws 16, 27 and 34	3900	FINPI	GADED 3.8 NM to RW34	FILGA 2500	MEPTE	3000	GP 3.00° TCH 50
	1.7 NM	2.1 NM	2.4 NM	6.1 NM			
CATEGORY	A	B	C	D			
LPV DA	900-1¼		438 (500-1¼)				
LNAV MDA	1020-1	558 (600-1)	1020-1½	558 (600-1½)			
C CIRCLING	1200-1	709 (800-1)	1200-2 709 (800-2)	1200-2¼ 709 (800-2¼)			

NE-2, 11 JUL 2024 to 08 AUG 2024

NE-2, 11 JUL 2024 to 08 AUG 2024