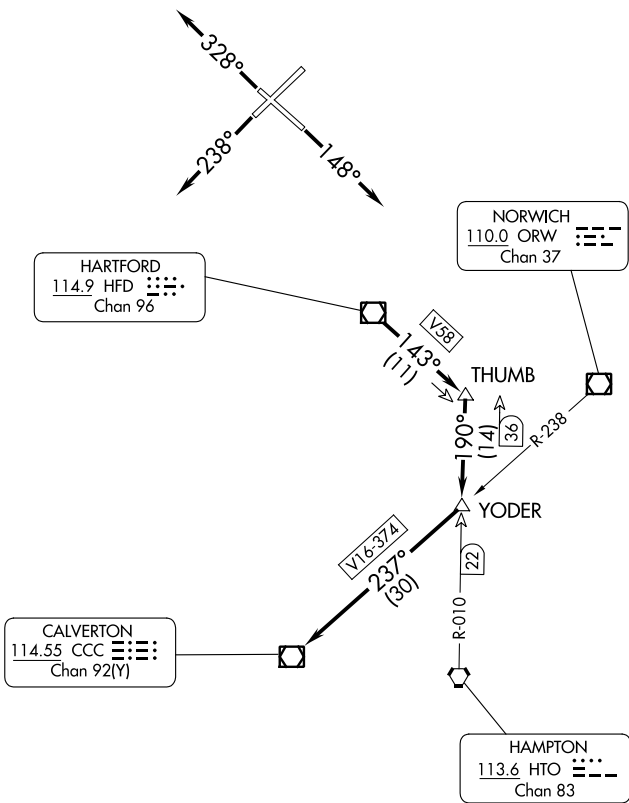


COASTAL NINE DEPARTURE

**TOP ALTITUDE:
4000**

D-ATIS 118.15
CLNC DEL
121.75 322.3
GND CON
121.9 348.6
CPDLC
BRADLEY TOWER
120.3 351.8
BRADLEY DEP CON
123.95 290.55 (061°-240°)
125.35 281.5 (241°-060°)



NOTE: RADAR required.

NOTE: Initial departure headings are predicated on avoiding noise sensitive areas. Flight crew awareness and compliance is important in minimizing noise impacts on surrounding communities.

TAKEOFF MINIMUMS:

Rwys 6, 15, 24: Standard.
Rwy 33: Standard with minimum climb of 340' per NM to 1000.

(NARRATIVE ON FOLLOWING PAGE)

NOTE: Chart not to scale.

COASTAL NINE DEPARTURE

NE-1, 11 JUL 2024 to 08 AUG 2024

NE-1, 11 JUL 2024 to 08 AUG 2024