


LOC/DME I-ALI 109.3 Chan 30	APP CRS 308°	Rwy Idg TDZE Apt Elev	5997 174 178
---	------------------------	-----------------------------	---

LOC/DME RWY 31

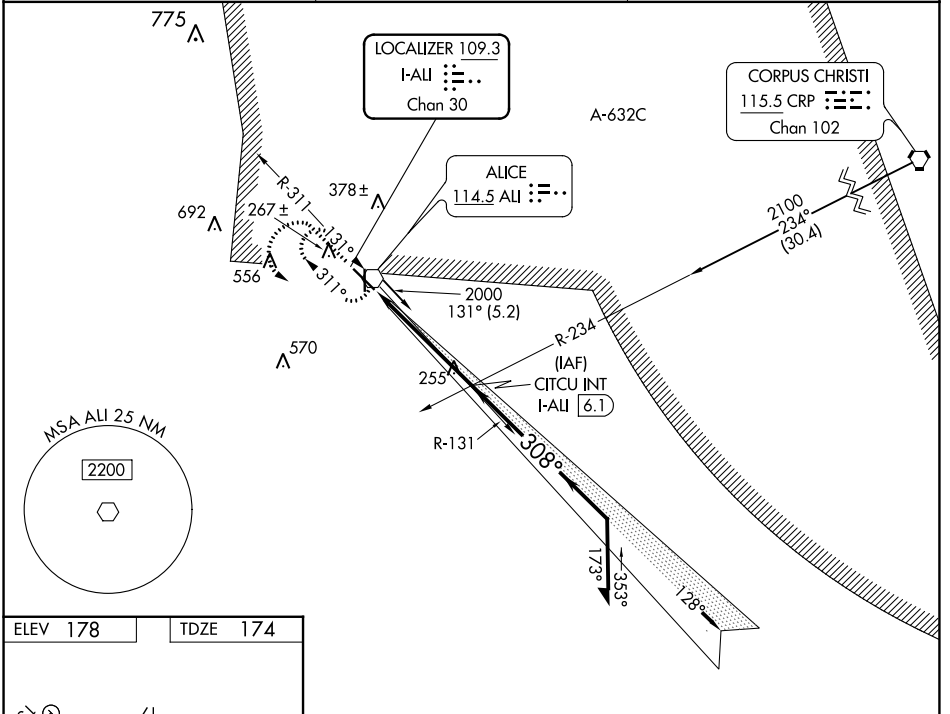
ALICE INTL (ALI)

RADAR required for procedure entry from Corpus Christi CRP VORTAC.

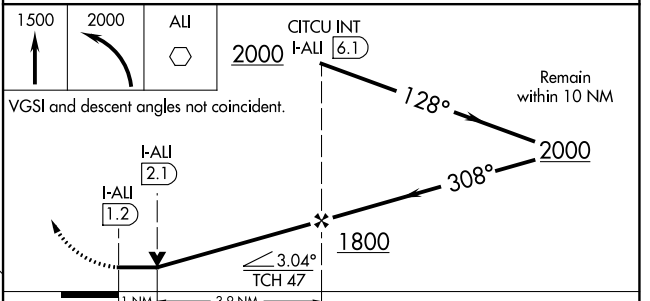
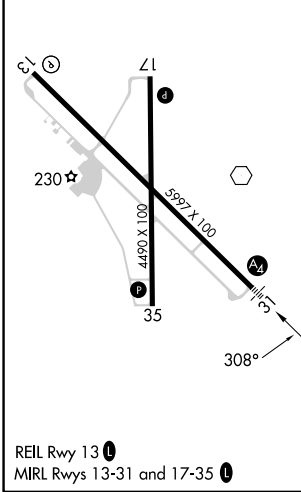
▼ VDP NA when using Nueces County altimeter setting. When local altimeter setting not received, use Nueces County altimeter setting and increase all MDAs 60 feet and S-LOC 31 visibility Cat C/D ¼ SM, and Circling visibility Cat D ¼ SM. For inop ALS when using Nueces County altimeter setting, increase S-31 Cats C, D visibility to 1½ SM.

MALS  MISSED APPROACH: Climb to 1500 then climbing left turn to 2000 on direct ALI VOR and hold.

ASOS 119.225	KINGSVILLE APP CON * 119.9 290.45	UNICOM 123.0 (CTAF)
------------------------	---	-------------------------------



ELEV 178	TDZE 174
-----------------	-----------------



CATEGORY	A	B	C	D
S-31		520-¾	346 (400-¾)	
CIRCLING	600-1 422 (500-1)	640-1 462 (500-1)	700-1½ 522 (600-1½)	900-2¼ 722 (800-2¼)

SC-3, 11 JUL 2024 to 08 AUG 2024

SC-3, 11 JUL 2024 to 08 AUG 2024