

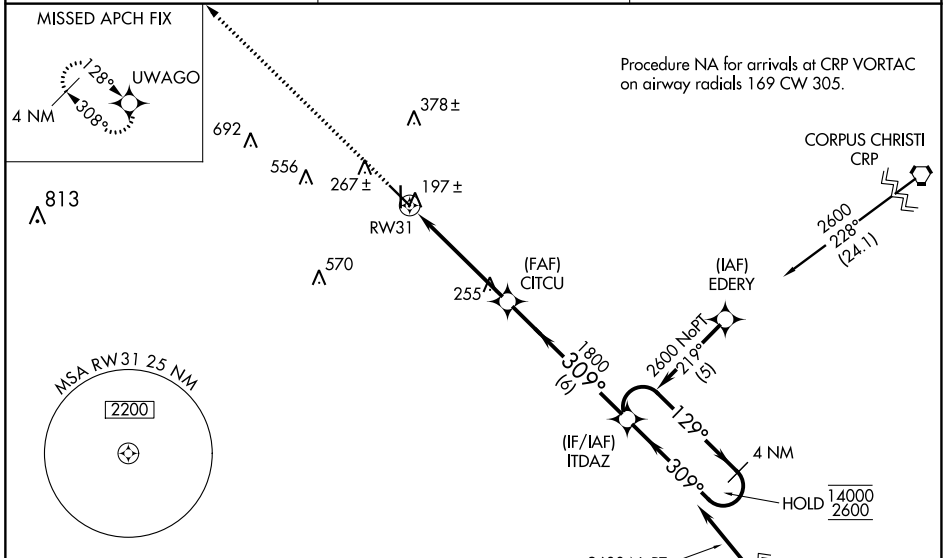
WAAS CH <b>81813</b> <b>W31A</b>	APP CRS <b>309°</b>	Rwy Idg TDZE Apt Elev	<b>5997</b> <b>174</b> <b>178</b>
--	------------------------	-----------------------------	---

# RNAV (GPS) RWY 31

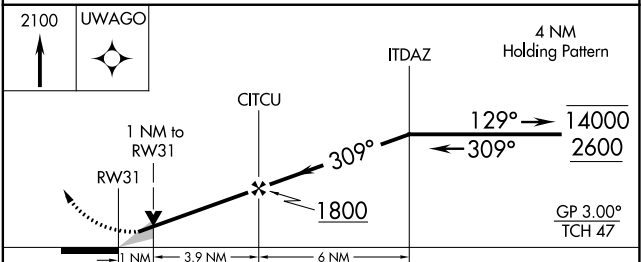
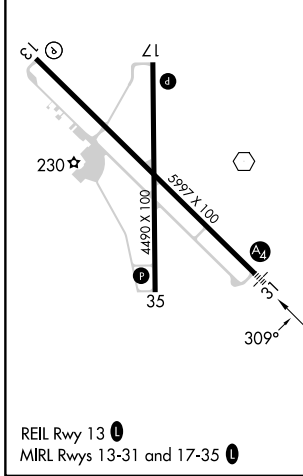
ALICE INTL (ALI)

RNP APCH - GPS.	MALS 	MISSED APPROACH: Climb to 2100 direct UWAGO and hold.
-----------------	----------	---

ASOS <b>119.225</b>	KINGSVILLE APP CON * <b>119.9 290.45</b>	UNICOM <b>123.0 (CTAF) 0</b>
------------------------	---	---------------------------------



ELEV 178	TDZE 174
----------	----------



CATEGORY	A	B	C	D
LPV DA		437- <sup>3</sup> / <sub>4</sub>	263 (300- <sup>3</sup> / <sub>4</sub> )	
LNAV/VNAV DA		467- <sup>3</sup> / <sub>4</sub>	293 (300- <sup>3</sup> / <sub>4</sub> )	
LNAV MDA		520- <sup>3</sup> / <sub>4</sub>	346 (400- <sup>3</sup> / <sub>4</sub> )	
CIRCLING	600-1 422 (500-1)	640-1 462 (500-1)	700-1½ 522 (600-1½)	900-2¼ 722 (800-2¼)