

# RNAV (RNP) Y RWY 18L

APCH CRS	Rwy Idg	9001
175°	TDZE	1382
	Arpt Elev	1382

AL-482 [USAF]

ALTUS AFB (KLTS)

RNP AR APCH - GPS

SALSF



MISSED APPROACH: Climb to 4000 direct CIPNO and hold.

▼\*When ALS inop, increase RVR to 45, vis to 7/8 mile.  
 \*\*When ALS inop, increase RVR to 55, vis to 1 mile.

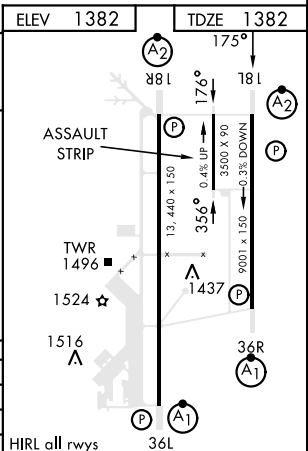
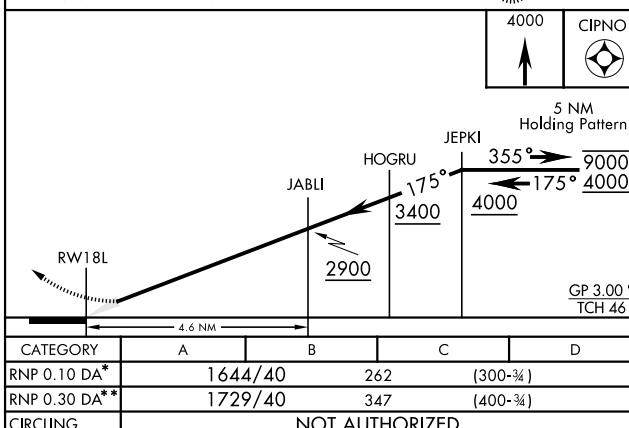
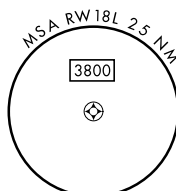
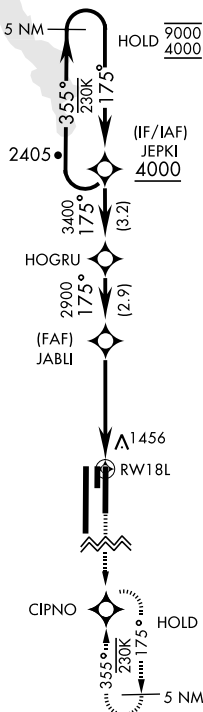
ATIS ★	FORT WORTH CENTER	APP CON	TOWER ★	GND CON	CLNC DEL
109.8 273.5	133.5 350.35	125.1 353.7	119.65 254.4	121.85 275.8	120.65 284.7

For uncompensated Baro-VNAV systems, procedure NA below -17°C (2°F) or above 54°C (130°F).

FOR USE BY 97 AMW ACFT ONLY

AUTHORIZATION REQUIRED

EMERG SAFE ALT 100 NM 4900



CATEGORY	A	B	C	D
RNP 0.10 DA*	1644/40		262	(300-¾)
RNP 0.30 DA**	1729/40		347	(400-¾)
CIRCLING	NOT AUTHORIZED			

# RNAV (RNP) Y RWY 18L

SC-1, 11 JUL 2024 to 08 AUG 2024

SC-1, 11 JUL 2024 to 08 AUG 2024