

# BESSA TWO DEPARTURE (RNAV) (BESSA2.BESSA)

TRAVIS AFB (KSUU)  
FAIRFIELD, CALIFORNIA

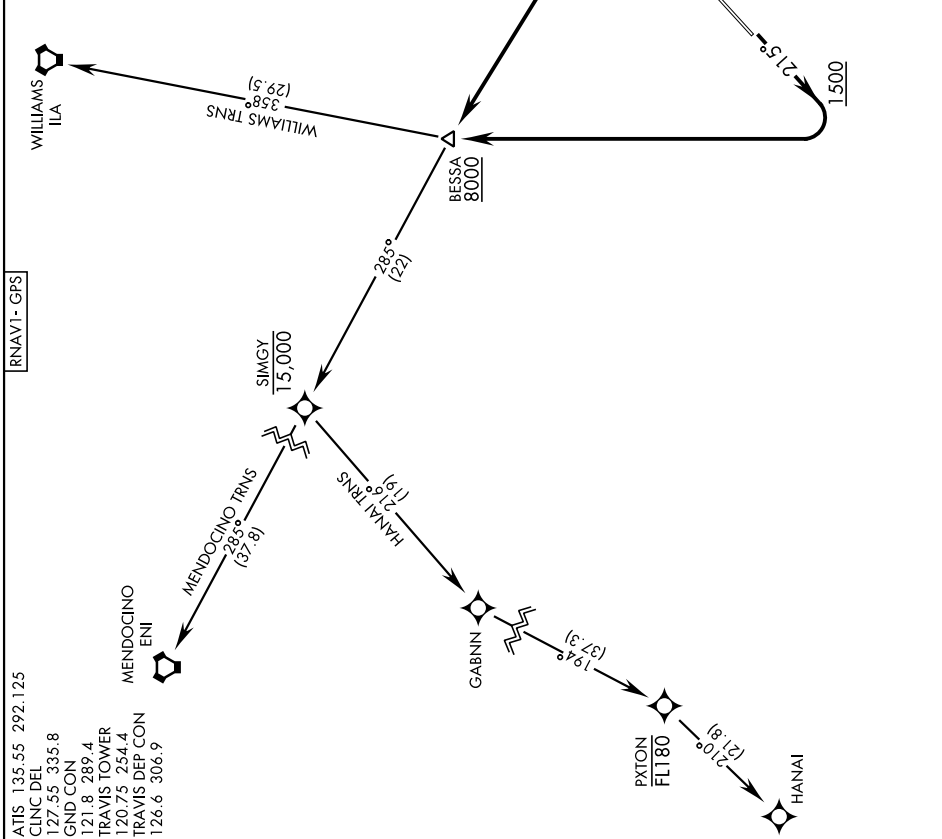
Rwy	Knots	60	120	180	240	300	360
*3R (C)	V/V(fpm)	201	402	603	804	1005	1206
† 3R (C)	V/V(fpm)	295	590	885	1180	1475	1770
† 3L (C)	V/V(fpm)	299	598	897	1196	1495	1794
*21L/R(C)	V/V(fpm)	220	440	660	880	1100	1320
†21R (C)	V/V(fpm)	277	554	831	1108	1385	1662
† 21L (C)	V/V(fpm)	280	560	840	1120	1400	1680

\* Minimum † ATC Climb Rate

- (C) to 500
- (C) to BESSA to 8000
- (C) to 4000

[USAF]

**▼ DEPARTURE ROUTE DESCRIPTION**  
**TAKEOFF RWY 3L/R:** Climb on heading 035° to 1500, then left turn direct to cross BESSA at or above 8000. Thence...  
**TAKEOFF RWY 21L/R:** Climb on heading 215° to 1500, then right turn direct to cross BESSA at or above 8000. Thence...  
 ...via assigned transition. Maintain ATC assigned altitude.  
**HANAI TRANSITION (BESSA2.HANAI)**  
**MENDOCINO TRANSITION (BESSA2.ENI)**  
**WILLIAMS TRANSITION (BESSA2.ILA)**



ATIS 135.55 292.125  
 CINC DEL 127.55 335.8  
 GND CON 121.8 289.4  
 TRAVIS TOWER 120.75 254.4  
 TRAVIS DEP CON 126.6 306.9

# BESSA TWO DEPARTURE (RNAV) (BESSA2.BESSA)

Orig 11JUL24

FAIRFIELD, CALIFORNIA  
TRAVIS AFB (KSUU)

SW-2, 11 JUL 2024 to 08 AUG 2024

SW-2, 11 JUL 2024 to 08 AUG 2024