

# ILS RWY 21L (CAT II)

TRAVIS AFB (KSUU)

LOC I-SUU <b>110.1</b>	APCH CRS <b>215°</b>	Rwy Idg <b>10,995</b> TDZE <b>58</b> Arprt Elev <b>63</b>
---------------------------	-------------------------	---

[USAF]

RNAV1 - GPS or RADAR required.

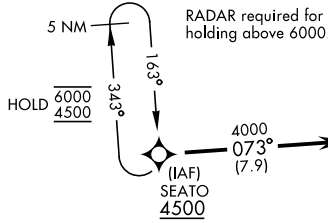
RADAR required for CAT E aircraft for full procedure off of SEATO.

ALSF-2

MISSED APPROACH: Climb to 2200 then climbing right turn to 4500 direct SEATO and hold, continue climb in hold to 4500.

ATIS <b>135.55 292.125</b>	APP CON <b>119.9 322.325 (S)</b> <b>126.6 281.45 (N)</b>	TOWER <b>120.75 254.4</b>	GND CON <b>121.8 289.4</b>	CLNC DEL <b>127.55 335.8</b>
-------------------------------	--	------------------------------	-------------------------------	---------------------------------

## CATEGORY II ILS SPECIAL AIRCREW & AIRCRAFT CERTIFICATION REQUIRED

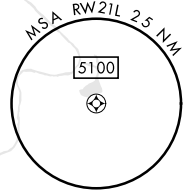
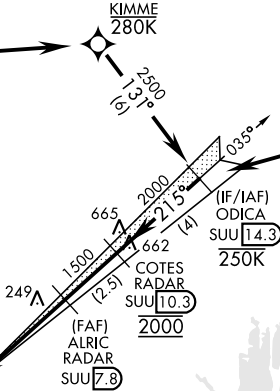


Max 250 KIAS N/A for Sacramento or straight-in entry.

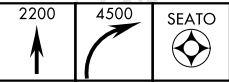
2835

TRAVIS  
Chan 113 SUU  
(116.60)

LOCALIZER 110.1  
I-SUU

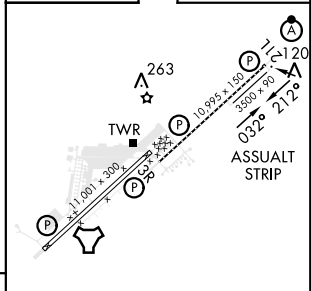
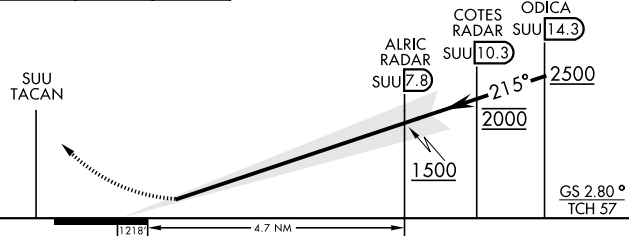


EMERG SAFE ALT 100 NM 13,000



VGSI and glidepath not coincident (VGSI Angle 2.80/TCH 75).

ELEV 63	TDZE 58
---------	---------



CATEGORY	A	B	C	D	E
S-ILS 21L	RA 83/12 100		DA 158		

HIRL Rwy 3R-21L  
MIRL Rwy 032° - 212°  
TDZL/CL Rwy 3R, 21L

# ILS RWY 21L (CAT II)

SW-2, 11 JUL 2024 to 08 AUG 2024

SW-2, 11 JUL 2024 to 08 AUG 2024