

TACAN RWY 21L

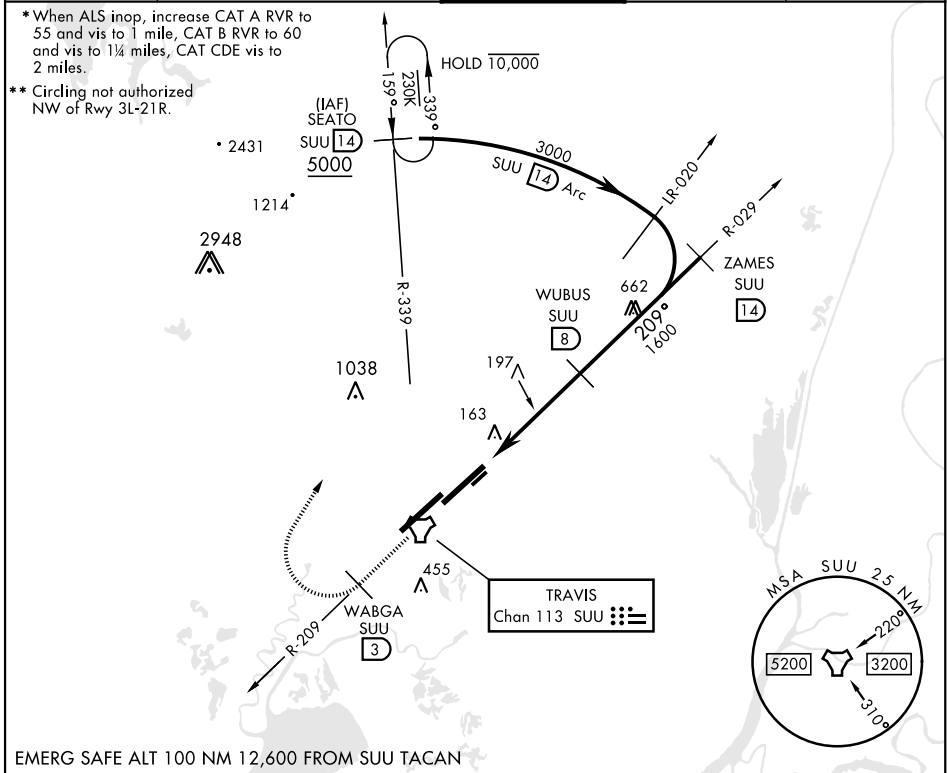
TACAN SUU Chan 113	APCH CRS 209°	Rwy Idg 10,995 TDZE 58 Arprt Elev 63
------------------------------	-------------------------	---

[USAF]

TRAVIS AFB (KSUU)

RADAR required ▼	ALS-2 Ⓐ	MISSED APPROACH: Climb to 5000 via SUU TACAN R-209 to WABGA, then turn right hdg 015° to intercept SUU R-339 to SEATO and hold, continue climb in hold to 5000.
---------------------	------------	---

ATIS 135.55 292.125	APP CON 119.9 322.325 (S) 126.6 281.45 (N)	TOWER 120.75 254.4	GND CON 121.8 289.4	CLNC DEL 127.55 335.8
-------------------------------	--	------------------------------	-------------------------------	---------------------------------



SW-2, 11 JUL 2024 to 08 AUG 2024

SW-2, 11 JUL 2024 to 08 AUG 2024

EMERG SAFE ALT 100 NM 12,600 FROM SUU TACAN

5000 SUU R-209	SEATO SUU 14	ELEV 63	TDZE 58		
CATEGORY	A	B	C	D	E
S-21L*	800/24 742 (800-½)	800/40 742 (800-¾)	800-1¼	742	(800-1¼)
CIRCLING**	800-1 737 (800-1)	800-1¼ 737 (800-1¼)	800-2 737 (800-2)	1200-3	1137 (1200-3)
HIRL Rwy 3R-21L MRL Rwy 032° - 212° TDZL/CL Rwy 3R, 21L					

TACAN RWY 21L