

(HOCUT5.HOCUT) 23334  
**HOCUT FIVE DEPARTURE**

CALIFORNIA REDWOOD COAST-HUMBOLDT COUNTY (ACV)  
 AL-519 (FAA)  
 ARCATA/EUREKA, CALIFORNIA

OAKLAND FSS  
 122.6  
 SEATTLE CENTER  
 124.85 306.3

CRESCENT CITY  
 109.0 CEC  
 Chan 27

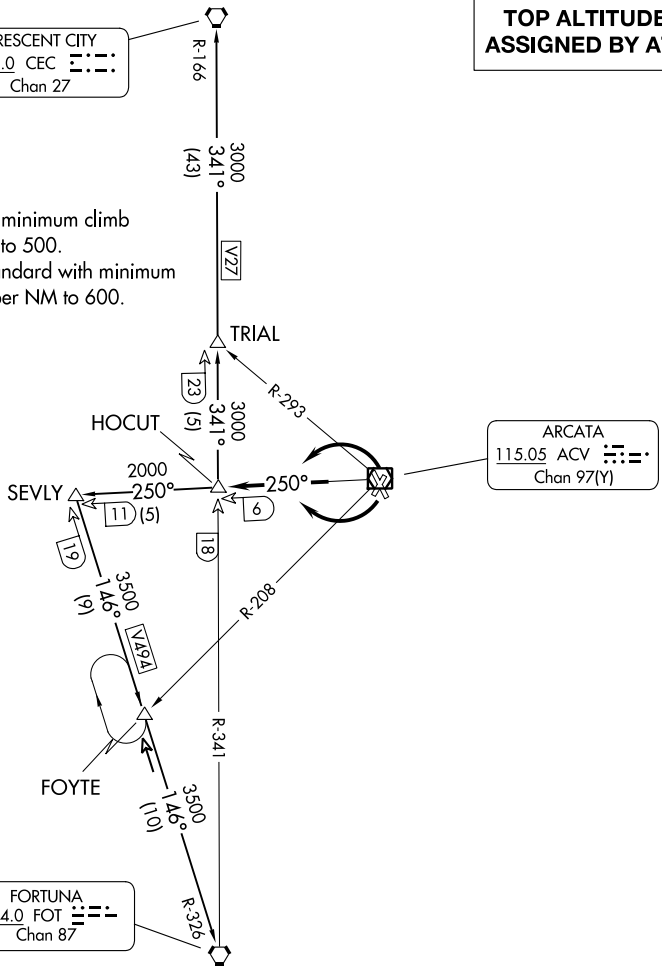
**TOP ALTITUDE:  
 ASSIGNED BY ATC**

**TAKEOFF MINIMUMS**

Rwy 19, 32: Standard.

Rwy 1: Standard with a minimum climb of 360' per NM to 500.

Rwy 14: 400-2 1/2 or standard with minimum climb of 382' per NM to 600.



SW-2, 11 JUL 2024 to 08 AUG 2024

SW-2, 11 JUL 2024 to 08 AUG 2024

NOTE: Chart not to scale.



**DEPARTURE ROUTE DESCRIPTION**

TAKEOFF RUNWAYS 1 and 32: Climbing left turn on ACV R-250, thence. . . .

TAKEOFF RUNWAYS 14 and 19: Climbing right turn on ACV R-250, thence. . . .  
 . . . .on (transition) or (assigned route).

CRESCENT CITY TRANSITION (HOCUT5.CEC): From over HOCUT INT on FOT R-341 and CEC R-166 to CEC VORTAC.

FORTUNA TRANSITION (HOCUT5.FOT): From over HOCUT INT on ACV R-250 to SEVLY INT, then via FOT R-326 to FOT VORTAC.

**HOCUT FIVE DEPARTURE**  
 (HOCUT5.HOCUT) 120CT17

ARCATA/EUREKA, CALIFORNIA  
 CALIFORNIA REDWOOD COAST-HUMBOLDT COUNTY (ACV)