

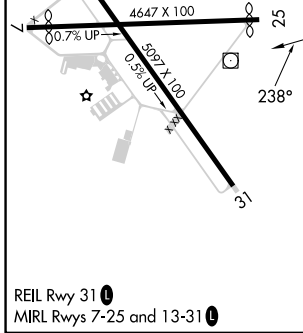
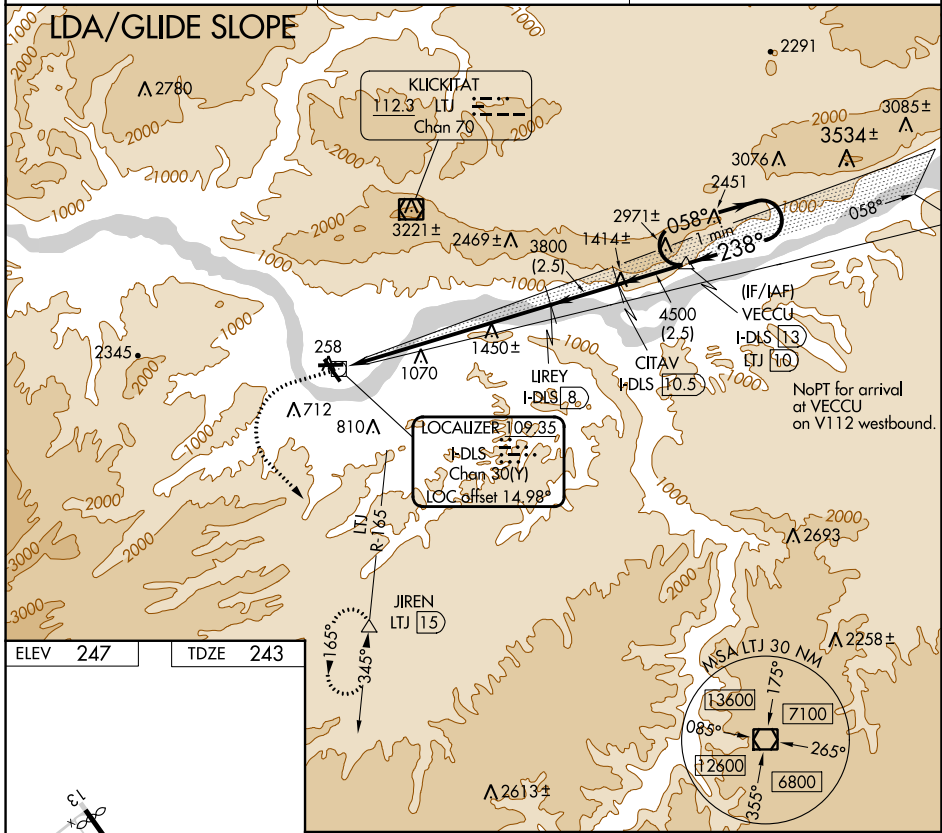
LOC/DME I-DLS 109.35 Chan 30(Y)	APP CRS 238°	Rwy Idg TDZE 4451 243 Apt Elev 247
---	------------------------	---

LDA/DME RWY 25

COLUMBIA GORGE RGNL/THE DALLES MUNI(DLS)

<p>V NA</p> <p>When local altimeter setting not received, procedure NA. Glide slope provided by standard glide slope equipment.</p>	<p>MISSED APPROACH: Climb to 1600 then climbing left turn to 7000 on heading 120° and LTJ VOR/DME R-165 to JIREN/LTJ 15 DME and hold, continue climb-in-hold to 7000.</p>	
---	---	--

ASOS 135.175	SEATTLE CENTER 119.65 257.6	UNICOM 123.0 (CTAF) 0
------------------------	---------------------------------------	---------------------------------



ELEV 247	TDZE 243			Use I-DLS DME when on the localizer course.	
1600	7000	LTJ R-165	JIREN	VECCU I-DLS 13	One Minute Holding Pattern
<p>↑ hdg 120°</p>		LIREY I-DLS 8	CITAV I-DLS 10.5	<p>058° → 5300</p> <p>← 238°</p> <p>GS 4.20° TCH 43</p>	
<p>7.9 NM</p>		<p>2.5 NM</p>		<p>2.5 NM</p>	
CATEGORY	A	B	C	D	
S-LDA/GS 25	1368-3 1125 (1200-3)		NA		

NW-1, 11 JUL 2024 to 08 AUG 2024

NW-1, 11 JUL 2024 to 08 AUG 2024