

JESEY FOUR ARRIVAL (RNAV)

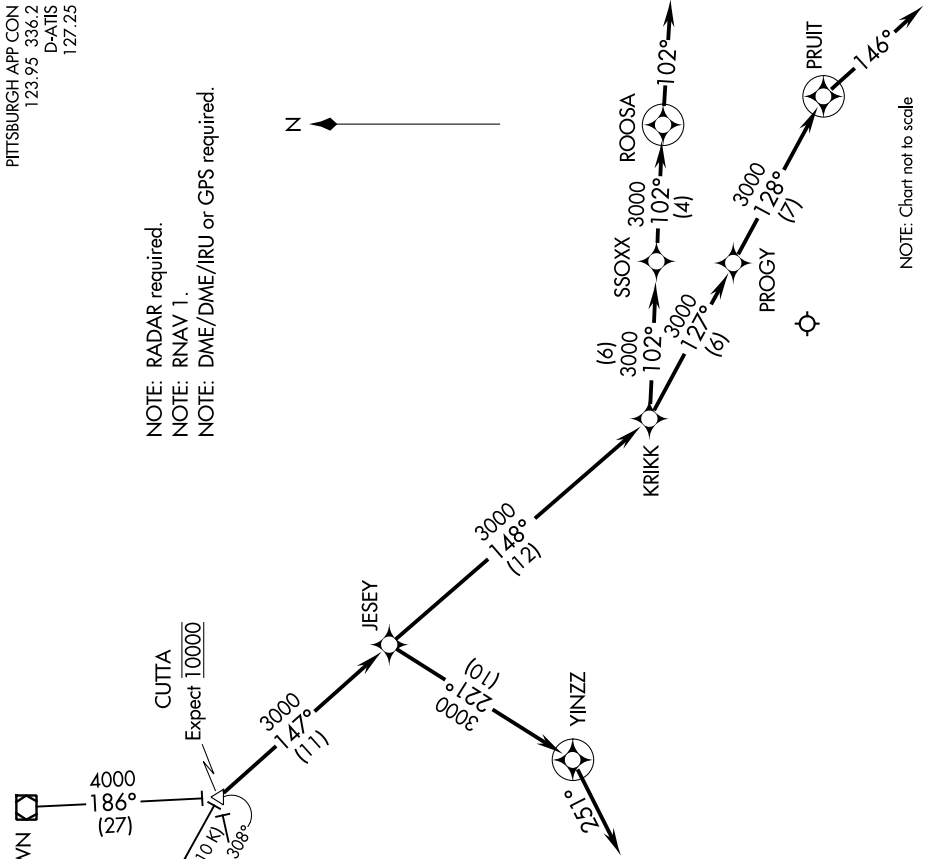
PITTSBURGH APP CON
123.95 336.2
D-ATIS
127.25

NOTE: RADAR required.
NOTE: RNAV 1.
NOTE: DME/DME/IRU or GPS required.



NOTE: Chart not to scale

NE-4, 11 JUL 2024 to 08 AUG 2024



NOTE: BRIGGS Transition
ATC assigned only.

ARRIVAL ROUTE DESCRIPTION

AKRON TRANSITION (ACO..JESEY4)
BRIGGS TRANSITION (BSV..JESEY4)
YOUNGSTOWN TRANSITION (YNG..JESEY4)

From CUTTA on track 147° to JESEY, thence on assigned runway transition.

LANDING RWY 10L/10C/10R: From JESEY on track 221° to YINZZ, then on heading 251°. Expect radar vectors to final approach course.

LANDING RWY 28L/28C/28R: From JESEY on track 148° to KRIKK, then on track 102° to SSOXX, then on track 102° to ROOSA, then on heading 102°. Expect radar vectors to final approach course.
LANDING RWY 32: From JESEY on track 148° to KRIKK, then on track 127° to PROGY, then on track 128° to PRUIT, then on heading 146°. Expect radar vectors to final approach course.

NE-4, 11 JUL 2024 to 08 AUG 2024

JESEY FOUR ARRIVAL (RNAV)