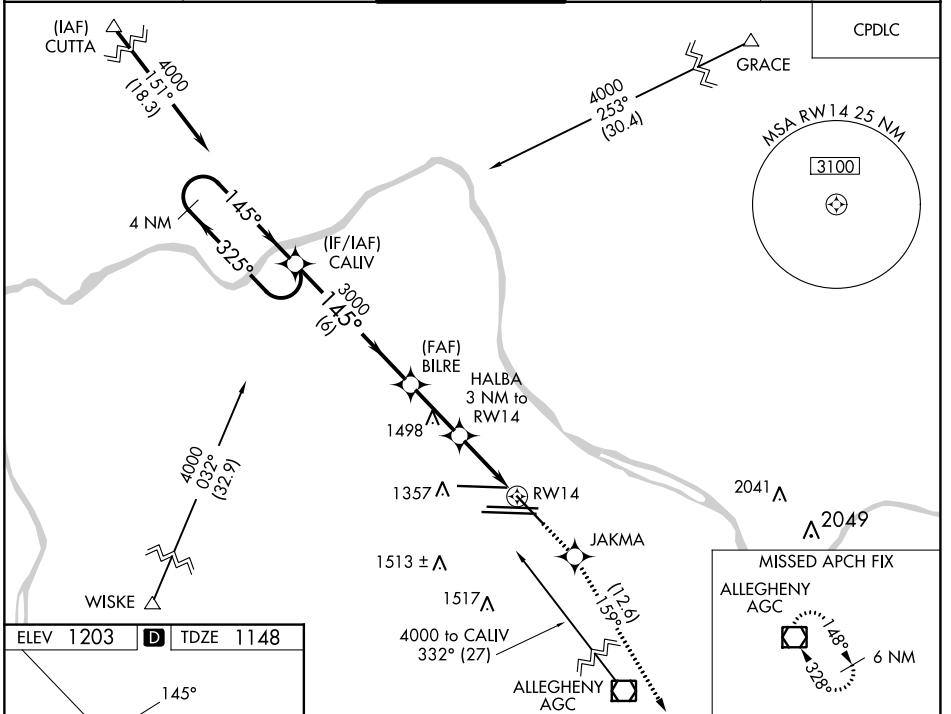


WAAS CH 77526 W14A	APP CRS 145°	Rwy Idg TDZE Apt Elev	7366 1148 1203
--	------------------------	-----------------------------	---

RNAV (GPS) RWY 14

PITTSBURGH INTL (PIT)

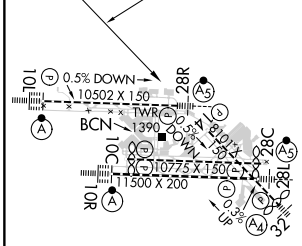
<p>⚠ For uncompensated Baro-VNAV systems, LNAV/VNAV NA below -17°C (2°F) or above 54°C (130°F). Rwy 14 helicopter visibility reduction below RVR 4000 NA. DME/DME RNP-0.3 NA.</p>		<p>MISSED APPROACH: Climb to 4000 direct JAKMA and on track 159° to AGC VOR/DME and hold.</p>		
D-ATIS ARR 127.25 DEP 135.9	PITTSBURGH APP CON 123.95 360.8	PITTSBURGH TOWER 128.3 291.7	GND CON SOUTH 121.9 348.6 NORTH 127.8 348.6	CLNC DEL 126.75 353.7



NE-4, 11 JUL 2024 to 08 AUG 2024

NE-4, 11 JUL 2024 to 08 AUG 2024

ELEV 1203	D	TDZE 1148
------------------	----------	------------------



<p>VGSI and RNAV glidepath not coincident (VGSI Angle 3.00/TCH 67').</p>			
4000	JAKMA	AGC	
4 NM	tr 159°		
4000 ← 325°	→ 145°	→ 145°	→ 159°
GP 3.00°	TCH 60	*2160	*1.3 NM to RWY 14
	6 NM	2.5 NM	1.7 NM

CATEGORY	A	B	C	D
LPV DA		1636-1¾	488 (500-1¾)	
LNAV/VNAV DA		1654-1¾	506 (500-1¾)	
LNAV MDA	1640/55	492 (500-1)	1640/60	492 (500-1¾)
C CIRCLING	1700-1	497 (500-1)	1880-2 677 (700-2)	1880-2¼ 677 (700-2¼)

REIL Rwy 10C
HIRL all Rwys
TDZ/CL Rwys 10L, 10R, 28L, 28R,
28C, and 32