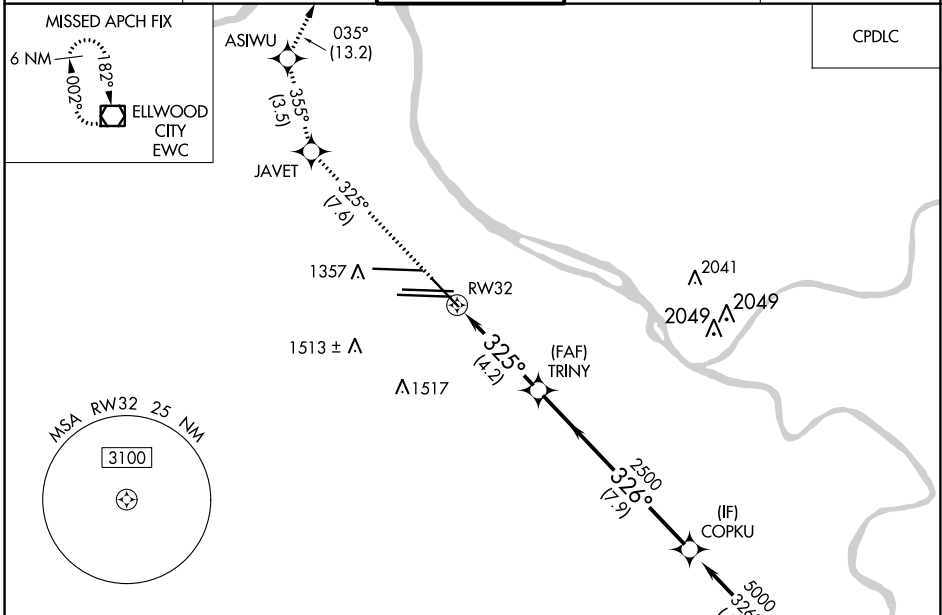


APP CRS <b>325°</b>	Rwy ldg TDZE Apt Elev	<b>7466</b> <b>1124</b> <b>1203</b>
------------------------	-----------------------------	---

# RNAV (RNP) Z RWY 32

PITTSBURGH INTL (PIT)

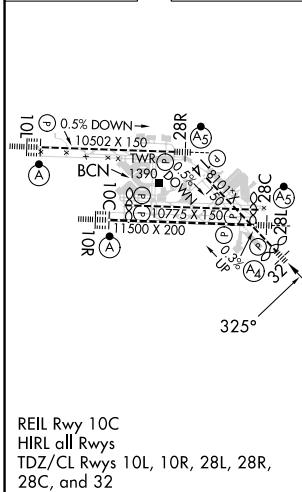
RNP AR APCH - GPS.		MALS	MISSED APPROACH: Climb to 4000 on track 325° to JAVET and track 355° to ASIWU and track 035° to EWC VOR/DME and hold.	
▼ For uncompensated Baro-VNAV systems, procedure NA below -18°C (0°F) or above 54°C (130°F).				
D-ATIS ARR <b>127.25</b> DEP <b>135.9</b>	PITTSBURGH APP CON <b>123.95 360.8</b>	PITTSBURGH TOWER <b>128.3 291.7</b>	GND CON SOUTH <b>121.9 348.6</b> NORTH <b>127.8 348.6</b>	CLNC DEL <b>126.75 353.7</b>



NE-4, 11 JUL 2024 to 08 AUG 2024

NE-4, 11 JUL 2024 to 08 AUG 2024

ELEV 1203	<b>D</b>	TDZE 1124
-----------	----------	-----------



4000	JAVET	ASIWU	EWC
↑	tr 325°	tr 355°	tr 035°
VGSi and RNAV glidepath not coincident (VGSi Angle 3.00/TCH 72).			
RWY 32	TRINY	COPKU	
2500	2500	5000	
4.2 NM		7.9 NM	
GP 3.00° TCH 37			
CATEGORY	A	B	C
RNP 0.30 DA	1503/40		379 (300-¾)
<b>AUTHORIZATION REQUIRED</b>			