

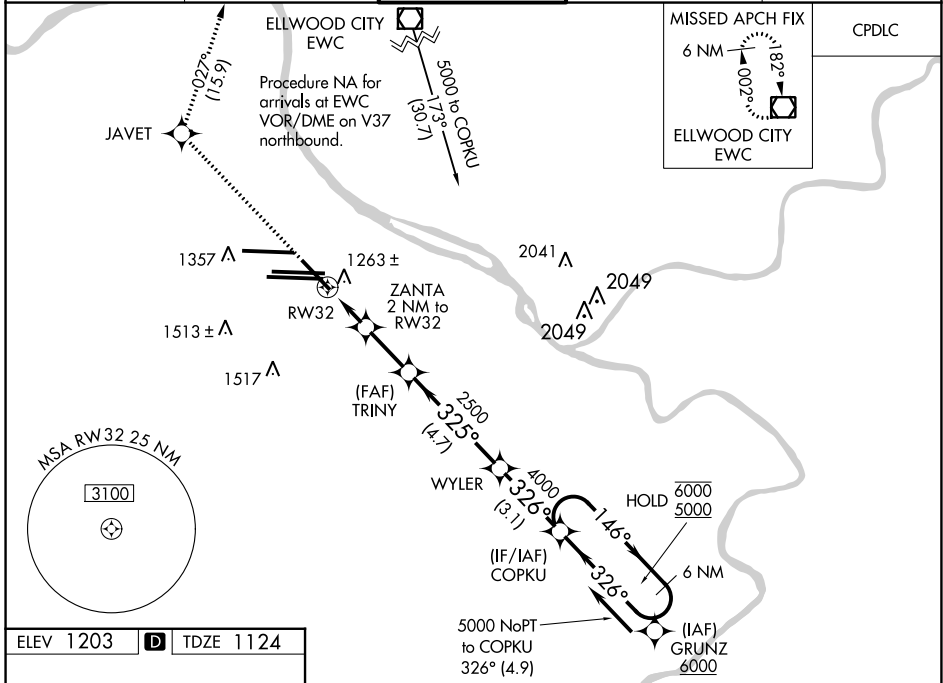
WAAS CH 70326 W32A	APP CRS 325°	Rwy Idg TDZE Apt Elev	7466 1124 1203
--	------------------------	-----------------------------	---

RNAV (GPS) Y RWY 32

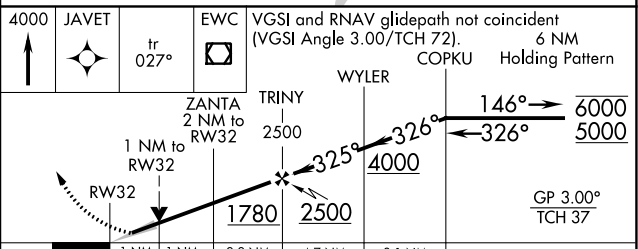
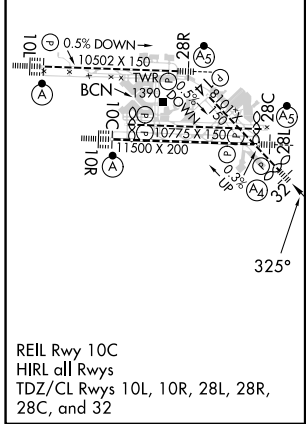
PITTSBURGH INTL (PIT')

RNP APCH - GPS.	MALS A4	MISSED APPROACH: Climb to 4000 direct JAVET and on track 027° to EWC VOR/DME and hold.
⚠ For uncompensated Baro-VNAV systems, LNAV/VNAV NA below -18°C (0°F) or above 54°C (130°F). Inop table does not apply to LPV. For inop ALS, increase LNAV/VNAV all Cats visibility to RVR 4500.		

D-ATIS ARR 127.25 DEP 135.9	PITTSBURGH APP CON 123.95 360.8	PITTSBURGH TOWER 128.3 291.7	GND CON SOUTH 121.9 348.6 NORTH 127.8 348.6	CLNC DEL 126.75 353.7
---	---	--	---	---------------------------------



ELEV 1203	D	TDZE 1124
------------------	----------	------------------



CATEGORY	A	B	C	D
LPV DA		1324/40	200 (200-¾)	
LNAV/VNAV DA		1438/40	314 (300-¾)	
LNAV MDA	1520/40	396 (400-¾)	1520/45	396 (400-¾)
C CIRCLING	1700-1	497 (500-1)	1880-2 677 (700-2)	1880-2 ¼ 677 (700-2 ¼)

NE-4, 11 JUL 2024 to 08 AUG 2024

NE-4, 11 JUL 2024 to 08 AUG 2024