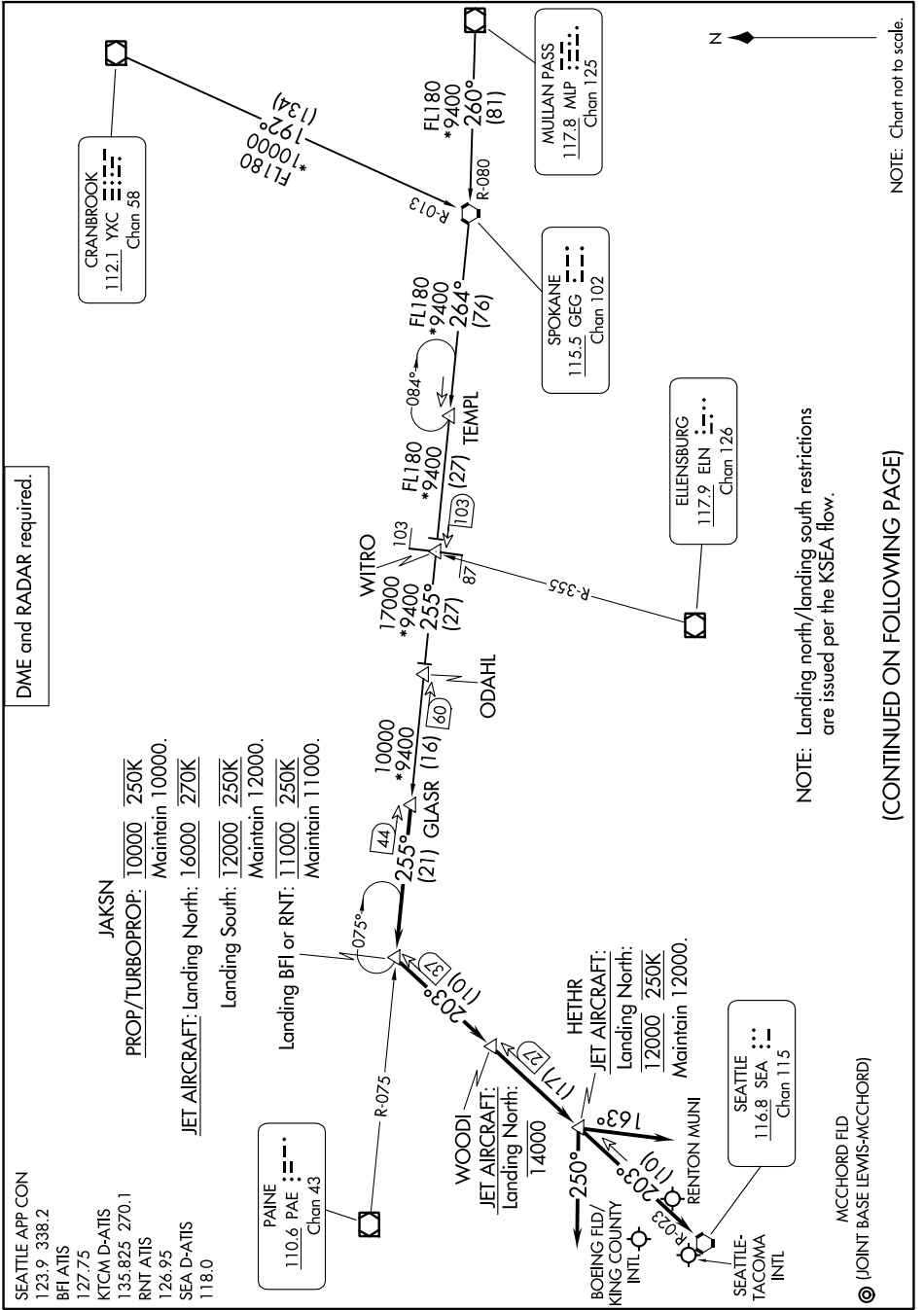


GLASR THREE ARRIVAL

AL-582 (FAA)

SEATTLE, WASHINGTON

NW-1, 11 JUL 2024 to 08 AUG 2024



NOTE: Chart not to scale.

NOTE: Landing north/landing south restrictions are issued per the KSEA flow.

(CONTINUED ON FOLLOWING PAGE)

NW-1, 11 JUL 2024 to 08 AUG 2024

GLASR THREE ARRIVAL

SEATTLE, WASHINGTON