

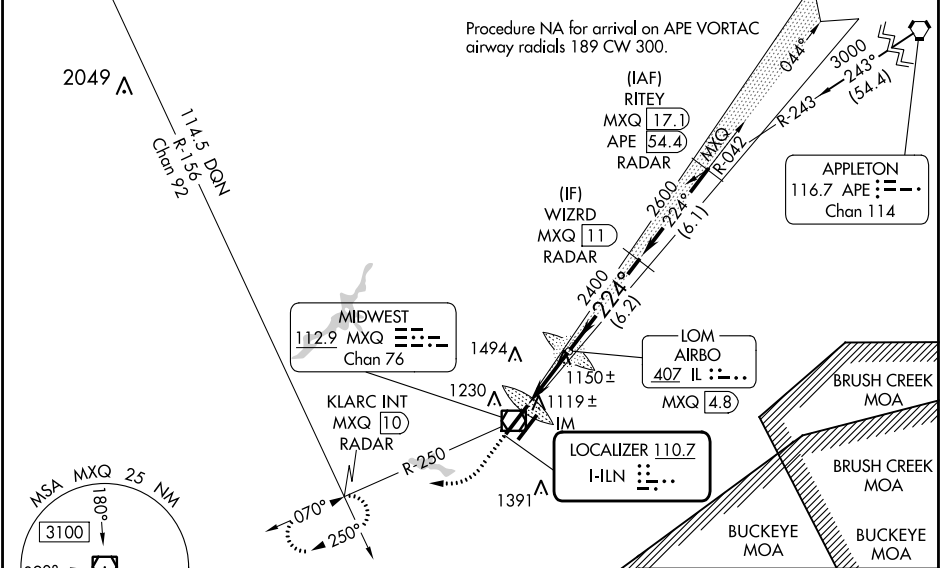
LOC I-ILN 110.7	APP CRS 224°	Rwy Idg 10701
		TDZE 1077
		Apt Elev 1077

ILS RWY 22R (CAT II & III)

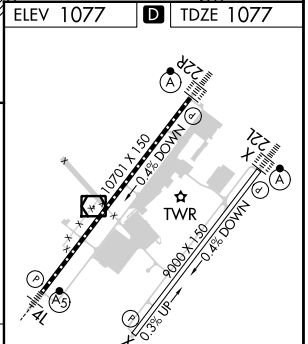
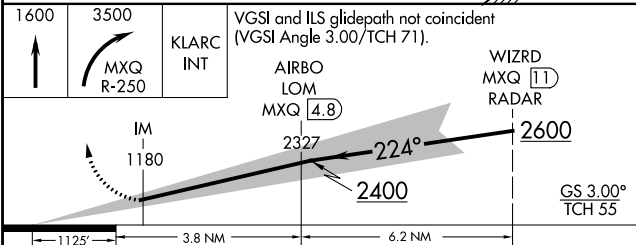
WILMINGTON AIR PARK (ILN)

DME or RADAR required for procedure entry.		ALSF-2 	MISSED APPROACH: Climb to 1600 then climbing right turn to 3500 on MXQ VOR/DME R-250 to KLARC INT/MXQ 10 DME/RADAR and hold, continue climb-in-hold to 3500.
	Simultaneous approach authorized. Procedure NA when control tower closed. DME from MXQ VOR/DME. DME use requires simultaneous reception of I-ILN and MXQ DME.		

D-ATIS 124.925	COLUMBUS APP CON 118.85 269.275	WILMINGTON TOWER 119.475	GND CON 121.6	CLNC DEL 128.85
--------------------------	---	------------------------------------	-------------------------	---------------------------



ELEV 1077	D	TDZE 1077
-----------	----------	-----------



CATEGORY	A	B	C	D
S-ILS 22R	CAT II RA 106/12 100 DA 1177			
S-ILS 22R	CAT III RVR 06			

CATEGORY II & III ILS - SPECIAL AIRCREW & AIRCRAFT CERTIFICATION REQUIRED

TDZ/CL Rwy 22L and 22R
HIRL Rwy 4L-22R and 4R-22L

EC-2, 11 JUL 2024 to 08 AUG 2024

EC-2, 11 JUL 2024 to 08 AUG 2024