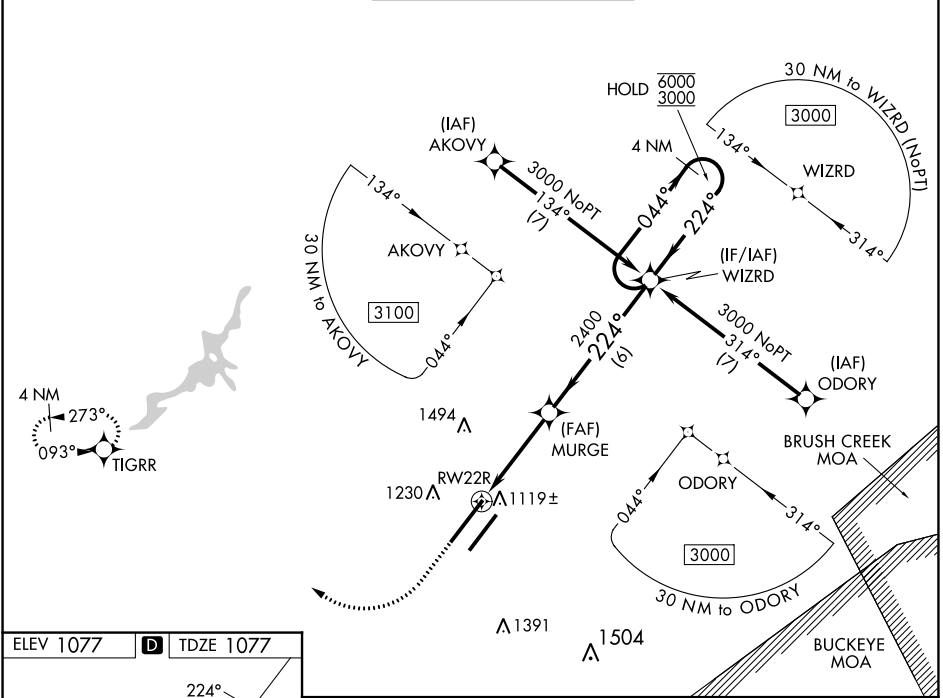


| | | |
|--|------------------------|--|
| WAAS CH 40214 W22A | APP CRS 224° | Rwy Idg 10701 TDZE 1077 Apt Elev 1077 |
|--|------------------------|--|

RNAV (GPS) RWY 22R

WILMINGTON AIR PARK (ILN)

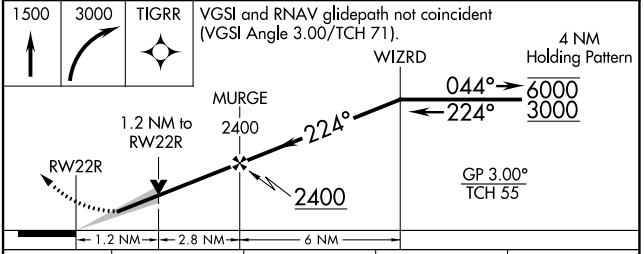
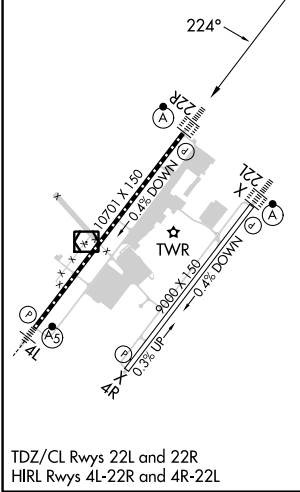
| | | | | | |
|--|---|------------------------------------|-------------------------|--|--|
| RNP APCH - GPS. | | ALSF-2 | | MISSED APPROACH: Climb to 1500 then right turn 3000 direct TIGRR and hold. | |
| For uncompensated Baro-VNAV systems, LNAV/VNAV NA below -19°C or above 54°C. For inop ALS, increase LNAV/VNAV all Cats visibility to RVR 4500. | | | | | |
| D-ATIS 124.925 | COLUMBUS APP CON 118.85 269.275 | WILMINGTON TOWER 119.475 | GND CON 121.6 | CLNC DEL 128.85 | |



EC-2, 11 JUL 2024 to 08 AUG 2024

EC-2, 11 JUL 2024 to 08 AUG 2024

| | | |
|-----------|----------|-----------|
| ELEV 1077 | D | TDZE 1077 |
|-----------|----------|-----------|



| CATEGORY | A | B | C | D |
|-------------------|---------|-------------|-------------------------|-------------------------|
| LPV DA | | 1277/18 | 200 (200-½) | |
| LNAV/VNAV DA | | 1393/24 | 316 (400-½) | |
| LNAV MDA | 1520/24 | 443 (500-½) | 1520/45 | 443 (500-¾) |
| C CIRCLING | 1560-1 | 483 (500-1) | 1860-2¼ 783 (800-2¼) | 1860-2½ 783 (800-2½) |