

PEORIA, ILLINOIS

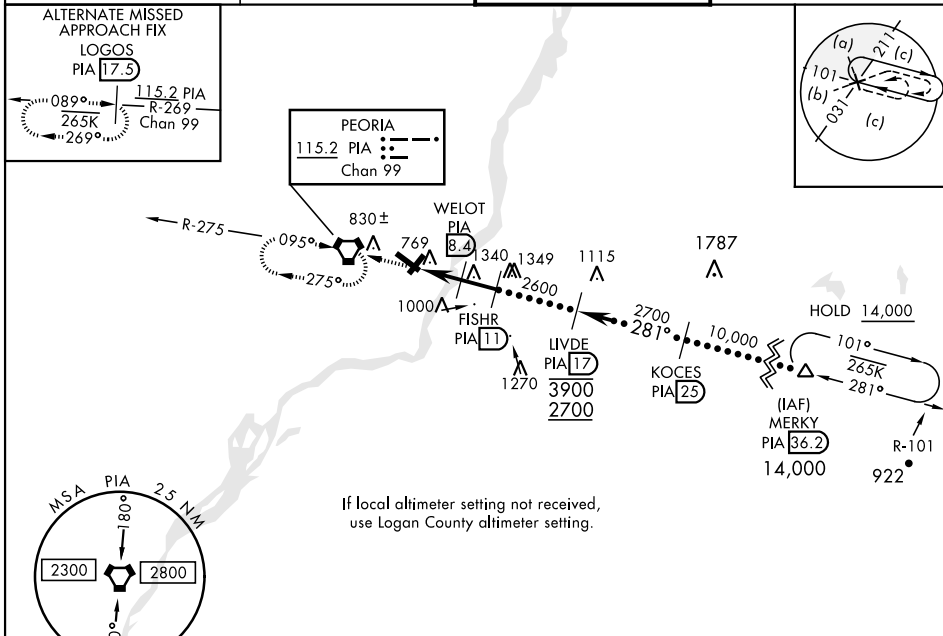
# HI-VOR or TACAN RWY 31

VORTAC PIA <b>115.2</b> Chan <b>99</b>	APCH CRS <b>281°</b>	Rwy Idg <b>10,104</b> TDZE Arpt Elev <b>661</b>
--	-------------------------	---

[USAF] GENERAL DOWNING - PEORIA INTL (KPIA)

DME required	MALSR	MISSED APPROACH: Climb to 2800, direct PIA VORTAC and hold. Continue climb-in-hold to 2800. (TACAN aircraft: continue on PIA R-269 to LOGOS/PIA 17.5 DME and hold west, right turn 089° inbound).
--------------	-------	---

ATIS <b>126.1 282.2</b>	SAINT LOUIS APP CON <b>125.8 269.2</b>	PEORIA TOWER <b>124.0 353.85</b>	GND CON <b>121.85 348.6</b>
----------------------------	---	-------------------------------------	--------------------------------



EMERG SAFE ALT 100 NM 3300	2800 PIA	MERKY 36.2 14,000
ELEV 661 D TDZE 650	WELOT 8.4 1760	KOCES 25 10,000
Rwy 4 Idg 7826' Rwy 13 Idg 9604'	FISHR 11 2600	LIVDE 17 3900 2700
682  692	3.3 NM	2.6 NM
709	3.05° TCH 55	
755	CATEGORY C D E	
709	S-31* 1040/60 390 (400-1½)	
709	CIRCLING* 1180-1¾ 1400-2¾ 1680-3	
709	519 (600-1¾) 739 (800-2¾) 1019 (1100-3)	
709	LOGAN COUNTY ALTIMETER MINIMA	
709	S-31* 1140-1¾ 490 (500-1¾)	
709	CIRCLING* 1280-1¾ 1500-2¾ 1780-3	
709	619 (700-1¾) 839 (900-2¾) 1119 (1200-3)	

PEORIA, ILLINOIS 40°40'N-89°42'W GENERAL DOWNING - PEORIA INTL (KPIA)

# HI-VOR or TACAN RWY 31

Amdt 1B 17JUN21

EC-3, 11 JUL 2024 to 08 AUG 2024

EC-3, 11 JUL 2024 to 08 AUG 2024