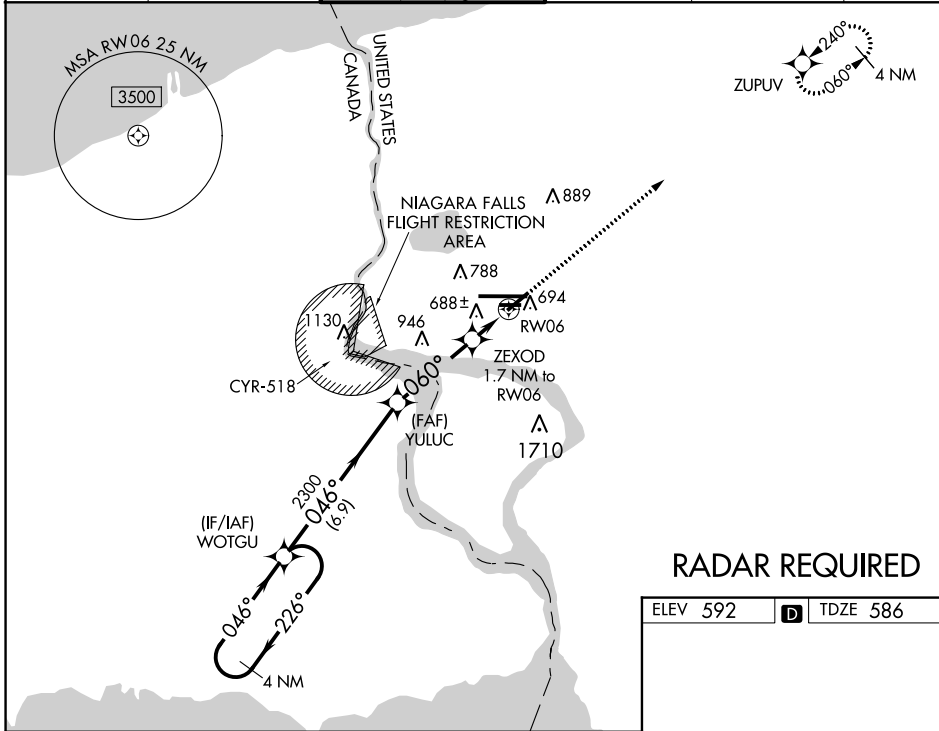


WAAS CH 90132 W06A	APP CRS 060°	Rwy ldg TDZE Apt Elev	5188 586 592
--	------------------------	-----------------------------	---

RNAV (GPS) RWY 6

NIAGARA FALLS INTL (IAG)

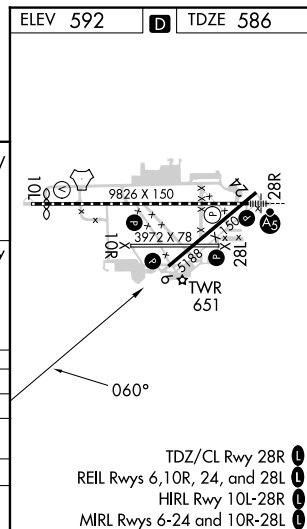
RNP APCH		<p>Baro-VNAV NA when using Buffalo Niagara Intl altimeter setting. For uncompensated Baro-VNAV systems, LNAV/VNAV NA below -18°C (0°F) or above 54°C (130°F). When local altimeter setting not received, use Buffalo Niagara Intl altimeter setting and increase all DA 51 feet and all MDA 60 feet, increase LNAV Cat C and D visibility 1/8 SM and Circling Cat C and D 1/4 SM. Rwy 6, 10R, 24, 28L helicopter visibility reduction below 1 SM NA. Straight-in Rwy 6 NA at night, Circling Rwy 6, 10R, 24, 28L NA at night.</p>				MISSED APPROACH: Climb to 3600 direct ZUPUV and hold.	
ATIS	BUFFALO APP CON	NIAGARA TOWER*	GND CON	CLNC DEL	UNICOM		
120.8 269.4	126.5 317.6	118.5 (CTAF) 0 349.0	125.3 275.8	119.25 251.1	122.95		



NE-2, 11 JUL 2024 to 08 AUG 2024

NE-2, 11 JUL 2024 to 08 AUG 2024

RADAR REQUIRED



4 NM Holding Pattern	VGS1 and RNAV glidepath not coincident (VGS1 Angle 3.00/TCH 45).			3600 ZUPUV
WOTGU	YULUC	ZEXOD	RW06	*LNAV only
3300 ← 226° / 046° →	2300	1.7 NM to RW06	1.7 NM	
GP 3.00° TCH 55	*1180			
	6.9 NM	3.5 NM	1.7 NM	
CATEGORY	A	B	C	D
LPV DA		864-1	278 (300-1)	
LNAV/VNAV DA		849-1	263 (300-1)	
LNAV MDA		940-1	354 (400-1)	
CIRCLING	1100-1 508 (600-1)	1280-2 688 (700-2)	1280-2 1/4 688 (700-2 1/4)	

- TDZ/CL Rwy 28R
- REIL Rws 6, 10R, 24, and 28L
- HIRL Rwy 10L-28R
- MIRL Rws 6-24 and 10R-28L