

WAAS CH <b>60938</b> <b>W05A</b>	APP CRS <b>054°</b>	Rwy Idg TDZE <b>70</b> Apt Elev <b>79</b>	<b>5400</b>
--	------------------------	---	-------------

# RNAV (GPS) RWY 5

NEW BEDFORD RGNL (E/WB)

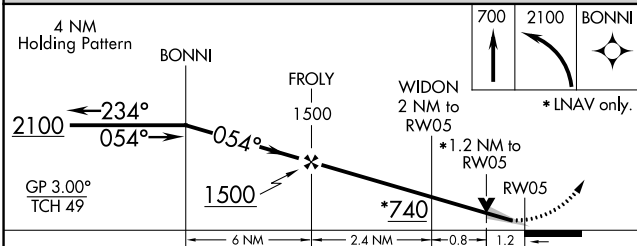
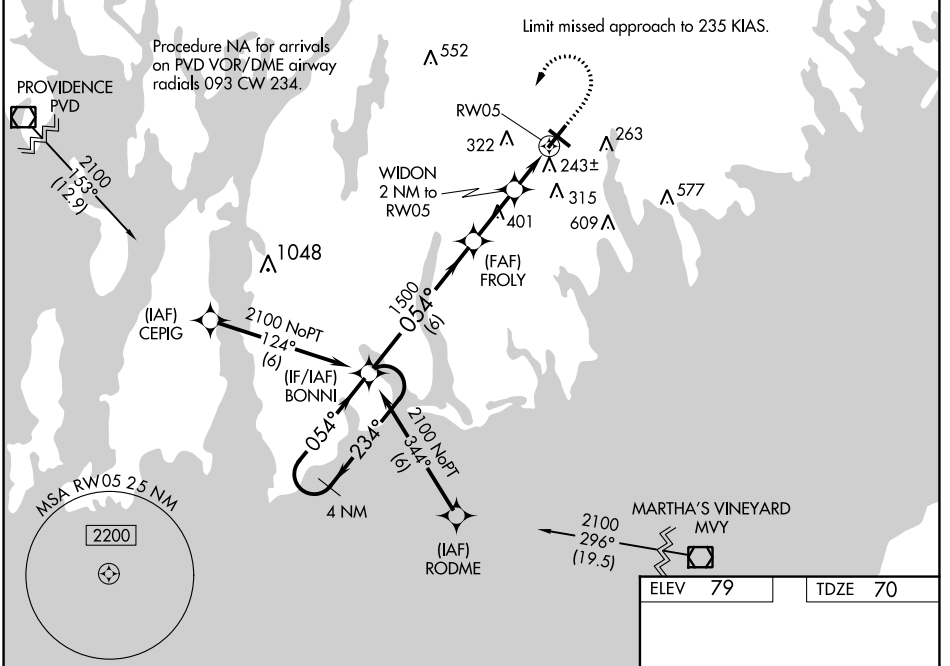
RNP APCH-GPS.

Baro-VNAV and VDP NA when using Taunton altimeter setting. For uncompensated Baro-VNAV systems, LNAV/VNAV NA below -16°C or above 54°C. When local altimeter setting not received, use Taunton altimeter setting and increase LPV DA to 304 feet, increase LNAV/VNAV DA to 487 feet and all visibilities to RVR 5000; increase all MDA 40 feet and LNAV Cats C/D visibility to RVR 5000. For inop MALS, when using Taunton altimeter setting, increase LPV all Cats visibility to RVR 4500, LNAV/VNAV all Cats and LNAV Cat C/D visibility to 1 3/8 miles. \*\* RVR 1800 authorized with use of FD or AP or HUD to DA, NA when using Taunton altimeter setting.

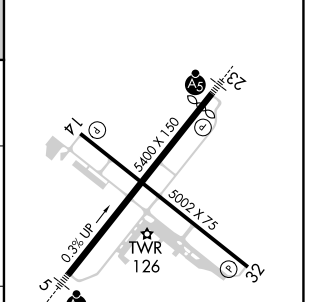
**MALS**

**MISSED APPROACH:**  
Climb to 700 then climbing left turn to 2100 direct BONNI and hold.

ATIS <b>126.85</b>	PROVIDENCE APP CON* <b>128.7 269,525</b>	NEW BEDFORD TOWER* <b>118.1 (CTAF) 0 239.0</b>	GND CON <b>121.9</b>	UNICOM <b>122.95</b>
-----------------------	---	---	-------------------------	-------------------------



ELEV 79	TDZE 70
---------	---------



CATEGORY	A	B	C	D
LPV DA **		270/24	200 (200-1/2)	
LNAV/VNAV DA		453/45	383 (400-7/8)	
LNAV MDA	500/24	430 (500-1/2)	500/40	430 (500-3/4)
CIRCLING	620-1 541 (600-1)	640-1 561 (600-1)	720-1 3/4 641 (700-1 3/4)	960-3 881 (900-3)

NE-1, 11 JUL 2024 to 08 AUG 2024

NE-1, 11 JUL 2024 to 08 AUG 2024