

WHITE PLAINS, NEW YORK

AL-651 (FAA)

23222

LOC/DME I-OJZ <b>109.7</b> Chan 34	APP CRS <b>343°</b>	Rwy Idg <b>6549</b> TDZE <b>401</b> Apt Elev <b>439</b>
--	------------------------	---

# ILS or LOC RWY 34

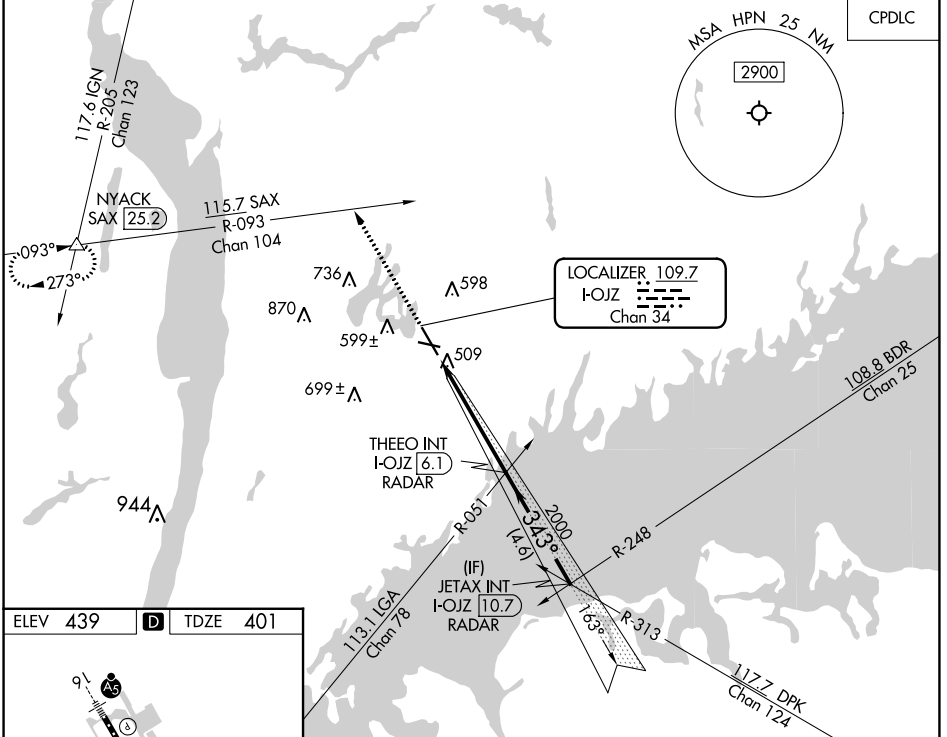
WESTCHESTER COUNTY (HPN)

RADAR required for procedure entry.

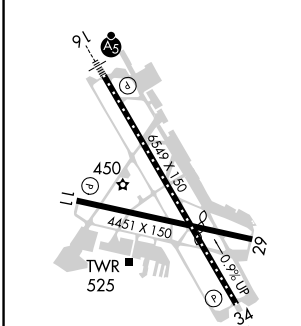
Circling Rwy 11, 29 NA at night.  
 Rwy 34 helicopter visibility reduction below ¾ SM NA.

MISSED APPROACH: Climb to 3000 on heading 343° and SAX R-093 to NYACK INT/SAX 25.2 DME and hold.

D-ATIS <b>133.8</b>	NEW YORK APP CON <b>120.8 126.4 257.65</b>	WESTCHESTER TOWER ★ <b>118.575</b> (CTAF) <b>284.65</b>	GND CON <b>121.825</b>	CLNC DEL <b>127.25</b>	CLNC DEL <b>126.4</b> (when twr closed)	UNICOM <b>122.95</b>
------------------------	---	--	---------------------------	---------------------------	---	-------------------------



ELEV 439	D	TDZE 401
----------	---	----------

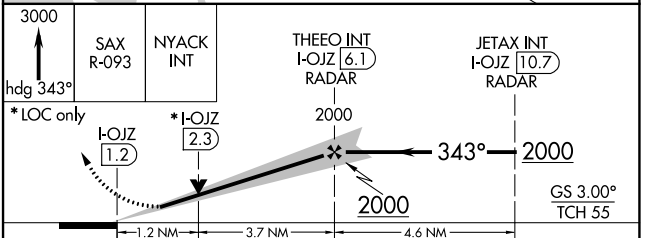


REIL Rwy 11 and 34   
 HIRL Rwy 16-34   
 MIRL Rwy 11-29   
 TDZ/CL Rwy 16

FAF to MAP 4.9 NM

Knots	60	90	120	150	180
Min:Sec	4:54	3:16	2:27	1:58	1:38

CIRCLING



CATEGORY	A	B	C	D
S-ILS 34	742/60		341 (400-1¼)	
S-LOC 34	800/55	399 (400-1)	800/60	399 (400-1¼)
CIRCLING	980-1	541 (600-1)	1080-1¾ 641 (700-1¾)	1200-2½ 761 (800-2½)

WHITE PLAINS, NEW YORK  
Amdt 5C 25FEB21

41°04'N-73°42'W

# WESTCHESTER COUNTY (HPN)

## ILS or LOC RWY 34

NE-2, 11 JUL 2024 to 08 AUG 2024

NE-2, 11 JUL 2024 to 08 AUG 2024