

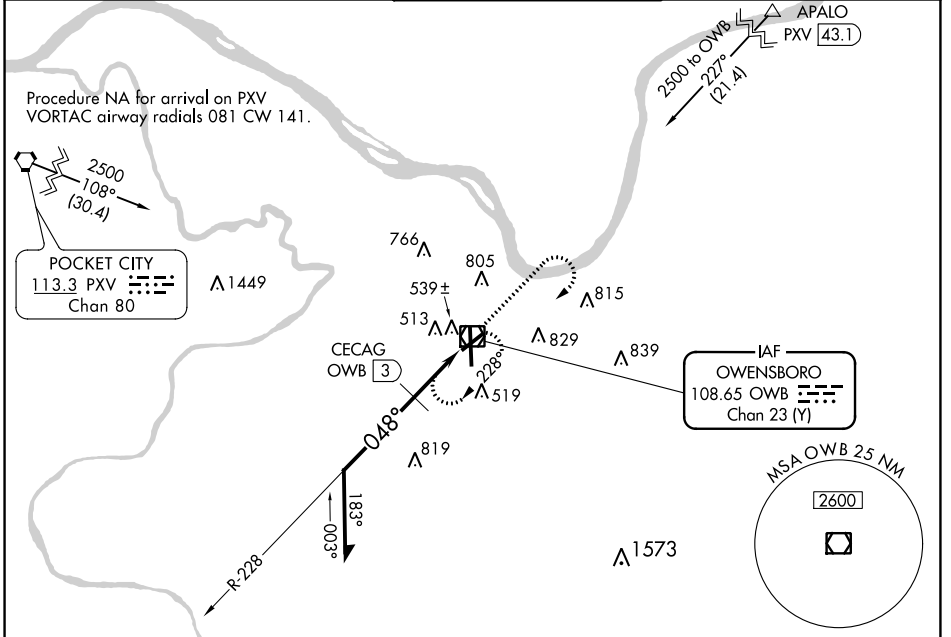
VOR/DME OWB <b>108.65</b> Chan <b>23 (Y)</b>	APP CRS <b>048°</b>	Rwy Idg TDZE Apt Elev	<b>5000</b> <b>405</b> <b>407</b>
--	------------------------	-----------------------------	---

# VOR RWY 6

OWENSBORO/DAVIESS COUNTY RGNL (OWB)

<p><b>▼</b> Rwy 6 helicopter visibility reduction below 3/4 SM NA.</p> <p><b>▲</b></p>	MISSED APPROACH: Climb to 1500 then climbing right turn to 2500 direct OWB VOR/DME and hold.
--	--

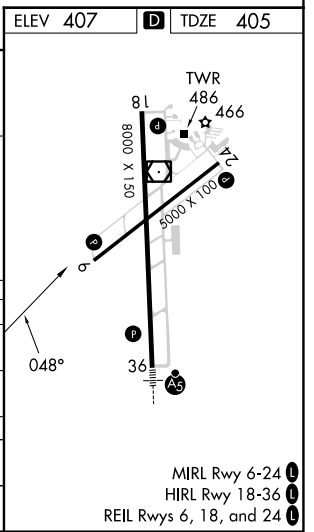
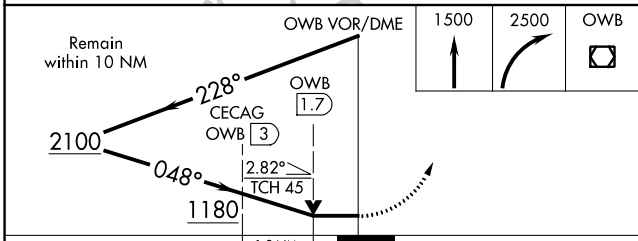
AWOS-3PT <b>119.025</b>	EVANSVILLE APP CON ★ <b>124.025 290.9</b>	OWENSBORO TOWER ★ <b>120.7 (CTAF) 251.15</b>	GND CON <b>121.7</b>	UNICOM <b>122.95</b>
----------------------------	--	---	-------------------------	-------------------------



SE-1, 11 JUL 2024 to 08 AUG 2024

SE-1, 11 JUL 2024 to 08 AUG 2024

ELEV 407	<b>D</b> TDZE 405
----------	-------------------



CATEGORY	A	B	C	D
S-6	1180-1 775 (800-1)	1180-1¼ 775 (800-1¼)	1180-2½	775 (800-2½)
<b>C</b> CIRCLING	1180-1 773 (800-1)	1180-1¼ 773 (800-1¼)	1180-2½	773 (800-2½)
CECAG FIX MINIMUMS				
S-6	820-1	415 (500-1)	820-1½	415 (500-1½)
<b>C</b> CIRCLING	860-1 453 (500-1)	1120-1 713 (800-1)	1140-2 733 (800-2)	1140-2¼ 733 (800-2¼)

MIRL Rwy 6-24  
HIRL Rwy 18-36  
REIL Rwys 6, 18, and 24

# VOR RWY 6