

WAAS CH 58311 W04A	APP CRS 041°	Rwy Idg TDZE 751 Apt Elev 755	6502
--	------------------------	---	-------------

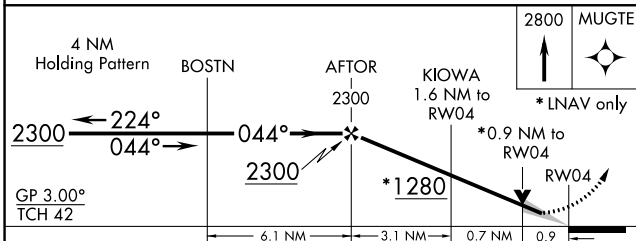
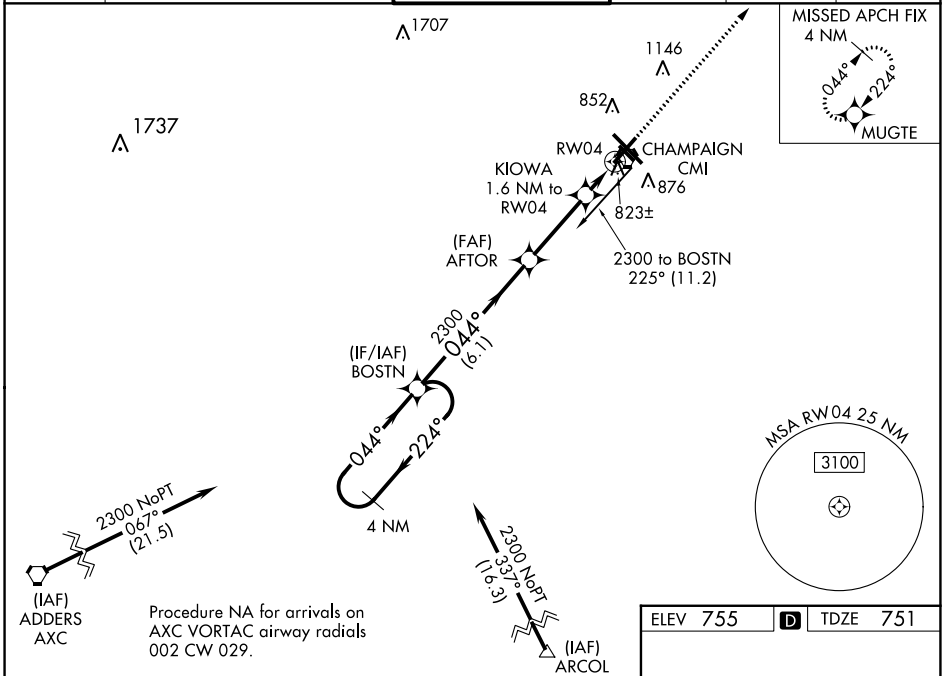
RNAV (GPS) RWY 4

UNIVERSITY OF ILLINOIS/WILLARD (CMI)

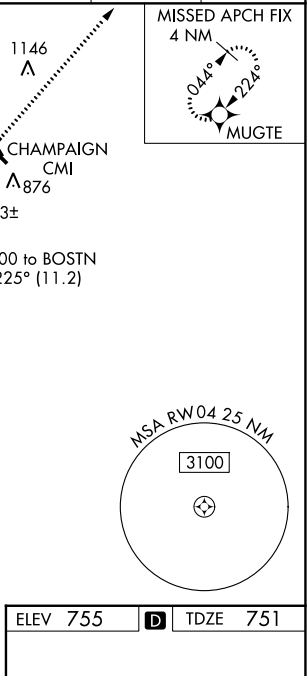
ASR For uncompensated Baro-VNAV systems, LNAV/VNAV NA below -21°C (-5°F) or above 54°C (130°F). When local altimeter setting not received, use Rantoul altimeter setting and increase all DA 41 feet, and all MDA 60 feet. Increase LNAV Cat D visibility ¼ mile. DME/DME RNP-0.3 NA. VDP and Baro-VNAV NA when using Rantoul altimeter setting.

MISSED APPROACH: Climb to 2800 direct MUGTE and hold.

ATIS 124.85	CHAMPAIGN APP CON ★ 121.35 285.65 (319°-138°) 132.85 290.225 (139°-318°)	CHAMPAIGN TOWER ★ 120.4 (CTAF) 0 229.4	GND CON 121.8	CLNC DEL 128.75	UNICOM 122.95
-----------------------	--	---	-------------------------	---------------------------	-------------------------



CATEGORY	A	B	C	D
LPV DA	1001-1 250 (300-1)			
LNAV/VNAV DA	1083-1¼ 332 (400-1¼)			
LNAV MDA	1080-1 329 (400-1)			
C CIRCLING	1240-1 485 (500-1)	1500-2¼ 745 (800-2¼)		1500-2½ 745 (800-2½)



EC-3, 11 JUL 2024 to 08 AUG 2024

EC-3, 11 JUL 2024 to 08 AUG 2024