

# TACAN RWY 25

TACAN LRF Chan <b>29</b>	APCH CRS <b>259°</b>	Rwy ldg TDZE <b>12,007</b> Arprt Elev <b>301</b>
--------------------------	----------------------	---

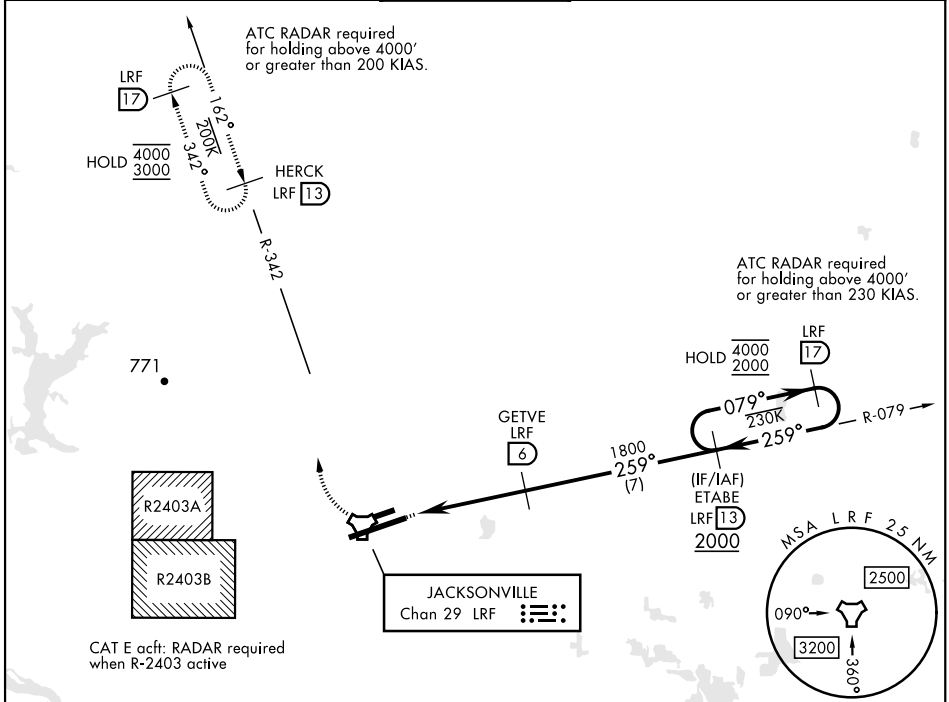
AL-738 [USAF]

LITTLE ROCK AFB (KLRF)

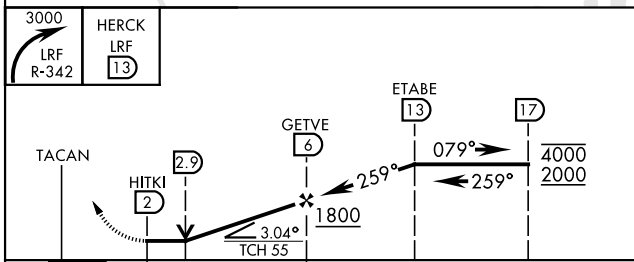
**ALSF-2**  MISSED APPROACH: Climbing right turn to 3000 to intercept LRF R-342 outbound to HERCK and hold as published.

**ALTERNATE MISSED APPROACH:** Climbing to 3000, fly runway heading until LRF 2 DME, then turn right heading 360°, EFC from ATC.

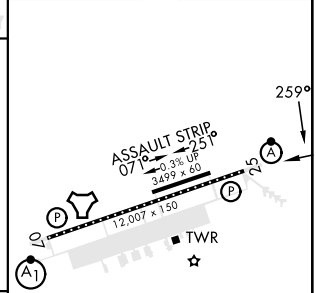
ATIS ★ <b>119.175 251.1</b>	APP CON <b>119.5 306.2</b>	TOWER <b>120.6 269.075</b>	GND CON <b>132.8 275.8</b>	CLNC DEL <b>253.5</b>
--------------------------------	-------------------------------	-------------------------------	-------------------------------	--------------------------



EMERG SAFE ALT 100 NM 4000



ELEV 312	TDZE 301
----------	----------



CATEGORY	A	B	C	D	E
S-25 *	800/24 499 (500-½)		800/50 499 (500-1)		
CIRCLING **	800-1 488 (500-1)	920-1 608 (700-1)	920-1¾ 608 (700-1¾)	1040-2¼ 728 (800-2¼)	1040-2½ 728 (800-2½)

HIRL Rwy 07-25  
TDZL/CL Rwy 25

# TACAN RWY 25

SC-1, 11 JUL 2024 to 08 AUG 2024

SC-1, 11 JUL 2024 to 08 AUG 2024