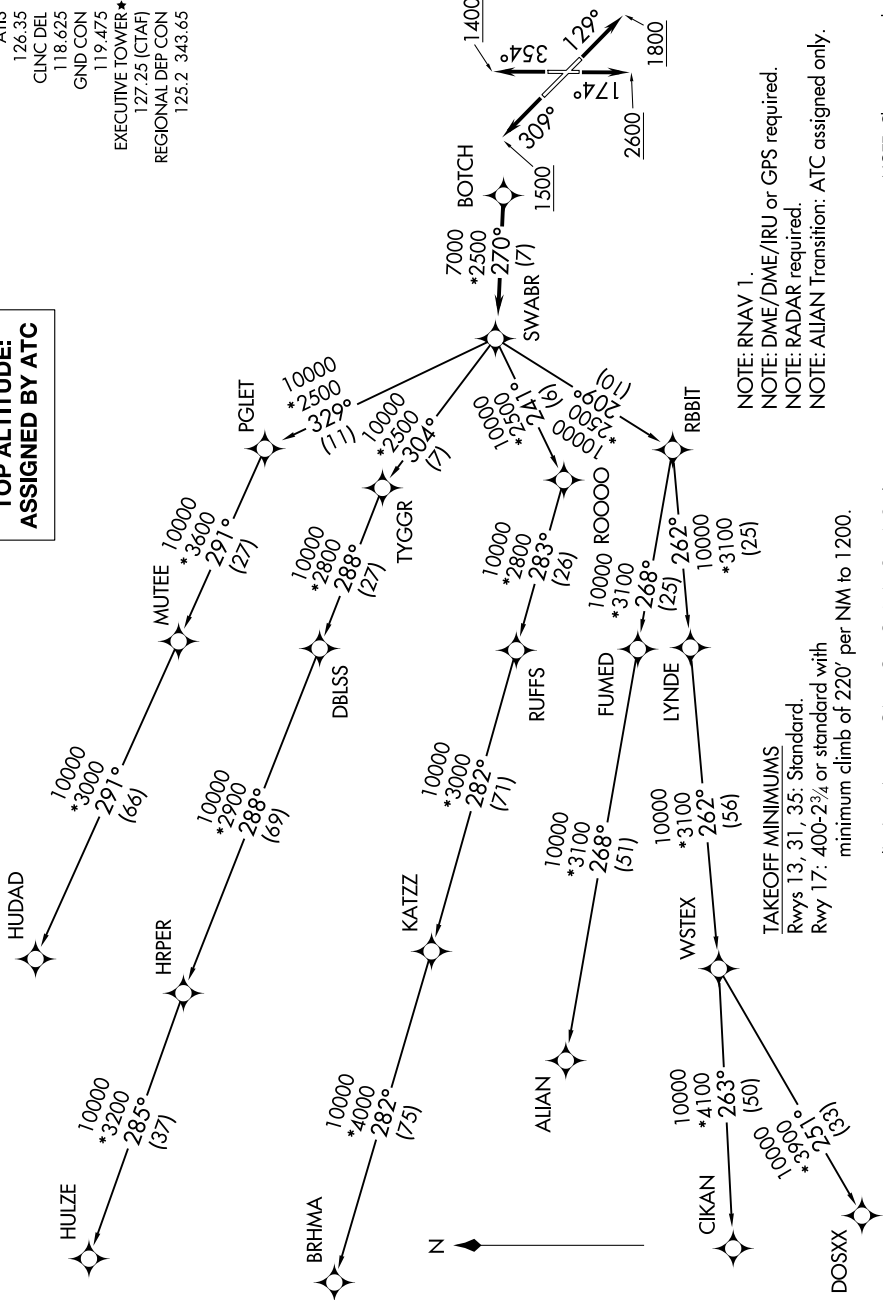


SWABR ONE DEPARTURE (RNAV)

SC-2, 11 JUL 2024 to 08 AUG 2024

TOP ALTITUDE: ASSIGNED BY ATC

- ATIS 126.35
- CLNC DEL 118.625
- GND CON 119.475
- EXECUTIVE TOWER* 127.25 (CTAF)
- REGIONAL DEP CON 125.2 343.65



- NOTE: RNAV 1.
- NOTE: DME/DME/IRU or GPS required.
- NOTE: RADAR required.
- NOTE: ALIANT Transition: ATC assigned only.

TAKEOFF MINIMUMS
 Rwy 13, 31, 35: Standard.
 Rwy 17: 400-2¾ or standard with
 minimum climb of 220' per NM to 1200.

NOTE: Chart not to scale.

SWABR ONE DEPARTURE (RNAV)

(NARRATIVE ON FOLLOWING PAGE)

SC-2, 11 JUL 2024 to 08 AUG 2024