

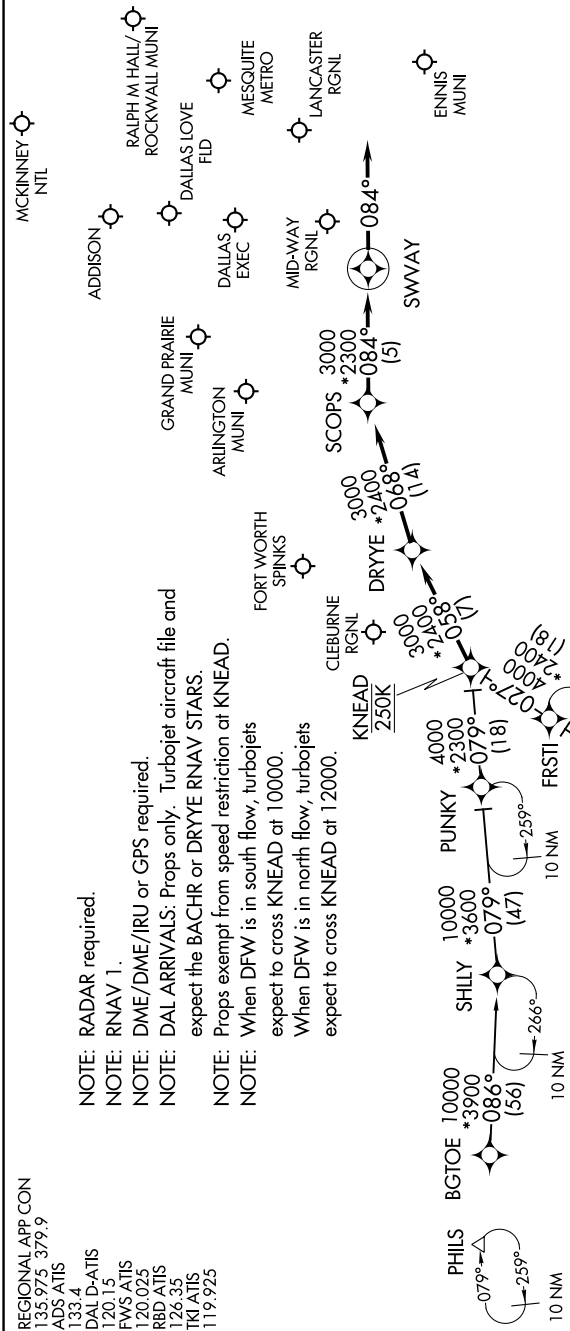
SWVAY FOUR ARRIVAL (RNAV)

DALLAS, TEXAS

SC-2, 11 JUL 2024 to 08 AUG 2024

REGIONAL APP CON
 135.975 379.9
 ADS ATIS
 133.4
 DAL D-ATIS
 120.15
 FWS ATIS
 120.025
 RBD ATIS
 126.35
 TKI ATIS
 119.925

NOTE: RADAR required.
 NOTE: RNAV 1.
 NOTE: DME/DME/IRU or GPS required.
 NOTE: DAL ARRIVALS: Props only. Turbojet aircraft file and expect the BACHR or DRYE RNAV STARS.
 NOTE: Props exempt from speed restriction at KNEAD.
 NOTE: When DFW is in south flow, turbojets expect to cross KNEAD at 10000.
 NOTE: When DFW is in north flow, turbojets expect to cross KNEAD at 12000.



ARRIVAL ROUTE DESCRIPTION

BGTOE TRANSITION (BGTOE.SWVAY4)
DITSY TRANSITION (DITSY.SWVAY4)
FRSTI TRANSITION (FRSTI.SWVAY4): (For ACT and GRK Terminal Area departures only).
SHILLY TRANSITION (SHILLY.SWVAY4): (For ABI Terminal Area departures only).

From KNEAD on track 058° to DRYE, then on track 068° to SCOPS, then on track 084° to SWVAY, then on track 084°. Expect RADAR vectors to final approach course.

NOTE: Chart not to scale.

SWVAY FOUR ARRIVAL (RNAV)

(KNEAD.SWVAY4) 26MAY16

DALLAS, TEXAS

SC-2, 11 JUL 2024 to 08 AUG 2024