

ILS or LOC RWY 9

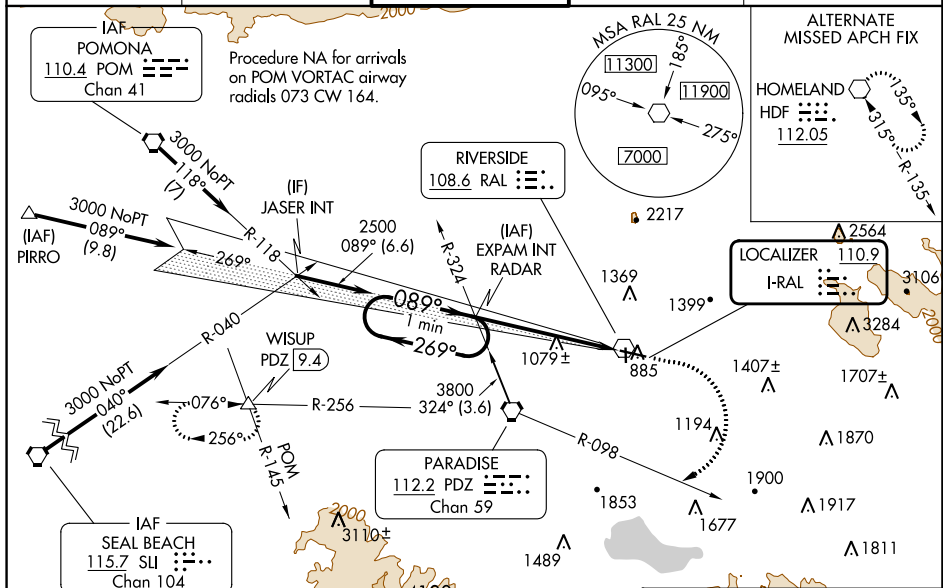
RIVERSIDE MUNI (RAL)

| | | |
|---------------------------|------------------------|------------------------|
| LOC I-RAL 110.9 | APP CRS 089° | Rwy Idg 5401 |
| | | TDZE 795 |
| | | Apt Elev 819 |

⚠ Circling NA north of Rwy 9-27 for Cat D. When local altimeter setting not received, use China altimeter setting and increase all DA 46 feet and all MDA 60 feet, increase S-ILS 9 visibility 1/8 mile all Cats, S-LOC 9 Cat C/D visibility 1/8 mile. Autopilot coupled approach NA below 1192.
*Missed approach requires minimum climb of 270 feet per NM to 2500.

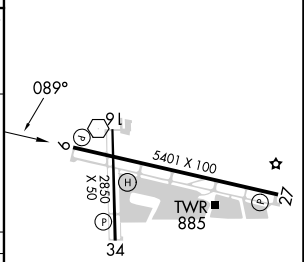
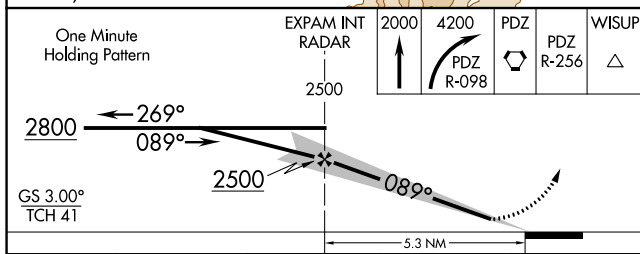
MISSED APPROACH: Climb to 2000 then climbing right turn to 4200 on PDZ VORTAC R-098 to PDZ VORTAC then on PDZ VORTAC R-256 to WISUP INT/PDZ VORTAC 9.4 DME and hold.

| | | | | |
|----------------------|---------------------------------------|---|--------------------------|-------------------------|
| ATIS 128.8 | SOCAL APP CON 135.4 377.125 | RIVERSIDE TOWER * 121.0 (CTAF) 0 257.8 | GND CON 124.12 | UNICOM 122.95 |
|----------------------|---------------------------------------|---|--------------------------|-------------------------|



Procedure NA for arrivals on SLI VORTAC airway radials 075 CW 080.

| | |
|----------|----------|
| ELEV 819 | TDZE 795 |
|----------|----------|



| CATEGORY | A | B | C | D |
|----------|-----------------------|-------------------------------|------------------------|-------------------------|
| S-ILS 9* | | 995-3/4 | 200 (200-3/4) | |
| S-ILS 9 | | 1131-1 | 336 (400-1) | |
| S-LOC 9* | 1280-1 | 485 (500-1) | 1280-1 3/8 | 485 (500-1 3/8) |
| S-LOC 9 | 1360-1 | 565 (600-1) | 1360-1 5/8 | 565 (600-1 5/8) |
| CIRCLING | 1360-1 541 (600-1) | 1680-1 1/4 861 (900-1 1/4) | 1800-3 981 (1000-3) | 1960-3 1141 (1200-3) |

MIRL Rwy 9-27 and 16-34 **⚠**

FAF to MAP 5.3 NM

| | | | | | |
|---------|------|------|------|------|------|
| Knots | 60 | 90 | 120 | 150 | 180 |
| Min:Sec | 5:18 | 3:32 | 2:39 | 2:07 | 1:46 |

SW-3, 11 JUL 2024 to 08 AUG 2024

SW-3, 11 JUL 2024 to 08 AUG 2024