

VOR/DME CVO <b>115.4</b> Chan <b>101</b>	APP CRS <b>252°</b>	Rwy Idg TDZE Apt Elev <b>N/A</b> <b>N/A</b> <b>250</b>
--	------------------------	--

VOR-A  
CORVALLIS MUNI (CVO)



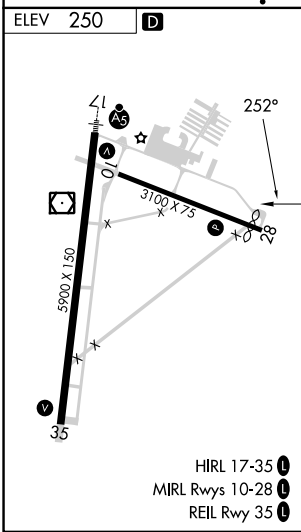
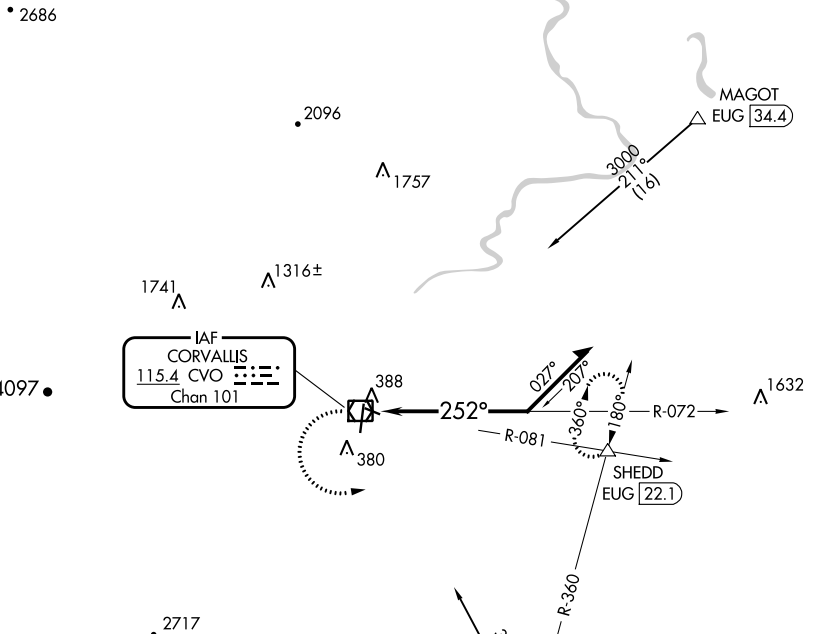
When local altimeter setting not received, procedure NA.  
Circling Rwy 28 NA at night.

MISSED APPROACH: Climbing left turn to 3000 on CVO  
VOR/DME R-081 to SHEDD INT/EUG 22.1 DME and  
hold, continue climb-in-hold to 3000.

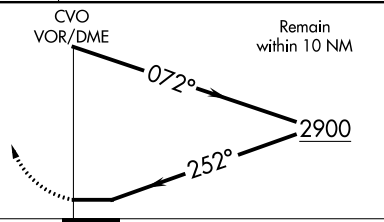
AWOS-3PT  
**135,775**

CASCADE APP CON \*  
**127.5 348.7**

UNICOM  
**123.075** (CTAF) **0**



3000	SHEDD
CVO R-081	△



CATEGORY	A	B	C	D
<b>0</b> CIRCLING	1400-1¼ 1150 (1200-1¼)	1400-1½ 1150 (1200-1½)	1400-3	1150 (1200-3)

NW-1, 11 JUL 2024 to 08 AUG 2024

NW-1, 11 JUL 2024 to 08 AUG 2024