

LOC/DME I-LCI 108.5 Chan 22	APP CRS 084°	Rwy Idg 5646 TDZE 545 Apt Elev 545
---	------------------------	---

ILS or LOC RWY 8

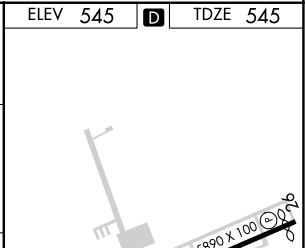
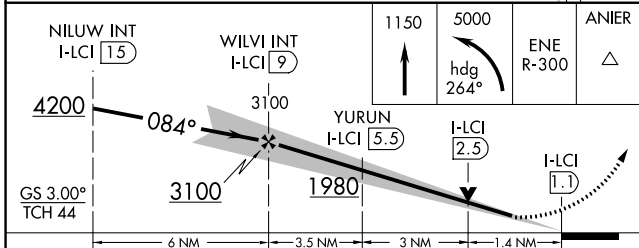
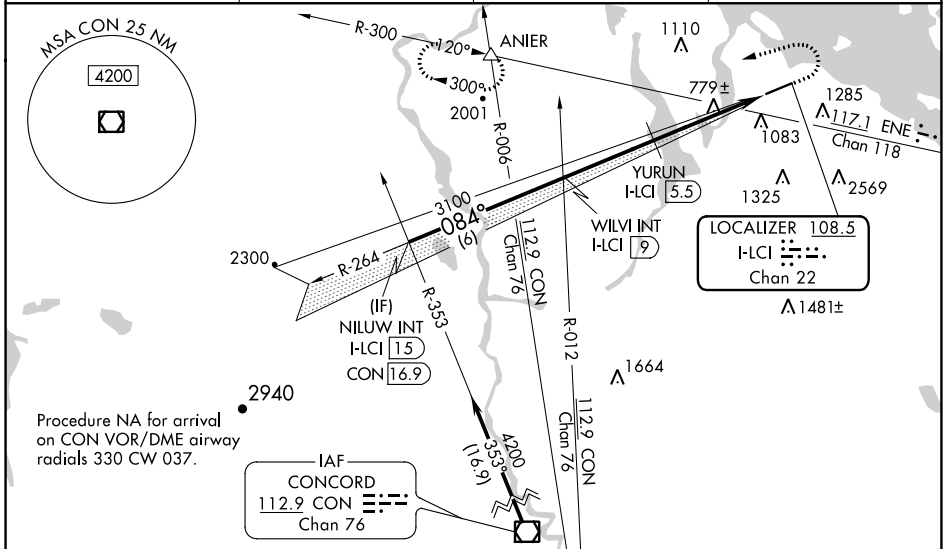
LACONIA MUNI (LCI)

⚠ Circling NA south of Rwy 8-26. Circling Rwy 26 NA at night. For inop ALS, increase S-ILS 8 visibility all Cats 1/8 SM, YURUN fix minimums increase S-LOC 8 Cats C and D visibility 1/4 SM. When local altimeter setting not received, use Concord altimeter setting and increase S-ILS * DA to 876 feet; increase S-ILS 8 DA to 983 feet and all visibilities 1/8 SM and increase all MDAs 100 feet, increase S-LOC 8 visibility Cat A 1/2 SM. Increase YURUN fix minimums visibility Cats C/D 1/4 SM and Circling visibility Cat C 1/4 SM. Inop table does not apply to S-LOC 8 Cats C and D.

MALSR
AS

MISSED APPROACH: Climb to 1150 then climbing left turn to 5000 on heading 264° and ENE VOR/DME R-300 to ANIER INT and hold, continue climb-in-hold to 5000.
*Missed approach requires minimum climb of 295 feet per NM to 1500.

AWOS-3PT 133.525	BOSTON APP CON 134.75 254.25	CLNC DEL 119.85	UNICOM 123.0 (CTAF) 0
----------------------------	--	---------------------------	---------------------------------



CATEGORY	A	B	C	D
S-ILS 8*	795-1/2		250 (300-1/2)	
S-ILS 8	902-5/8		357 (400-5/8)	
S-LOC 8	1980-3/4 1435 (1500-3/4)	1980-1 1435 (1500-1)	1980-3	1435 (1500-3)
C CIRCLING	1980-1 1/4 1435 (1500-1 1/4)	1980-1 1/2 1435 (1500-1 1/2)	1980-3	1435 (1500-3)
YURUN FIX MINIMUMS				
S-LOC 8	1040-1/2	495 (500-1/2)	1040-1	495 (500-1)
C CIRCLING	1160-1	615 (700-1)	1160-1 3/4 615 (700-1 3/4)	1460-3 915 (1000-3)

ELEV 545	D	TDZE 545			
ANIER	ENE R-300	△			
1150	5000	hdg 264°			
GS 3.00°	TCH 44	I-LCI (1.1)			
6 NM	3.5 NM	3 NM	1.4 NM		
FAF to MAP 7.9 NM					
Knots	60	90	120	150	180
Min:Sec	7:54	5:16	3:57	3:10	2:38

NE-1, 11 JUL 2024 to 08 AUG 2024

NE-1, 11 JUL 2024 to 08 AUG 2024