

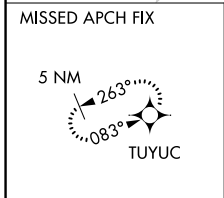
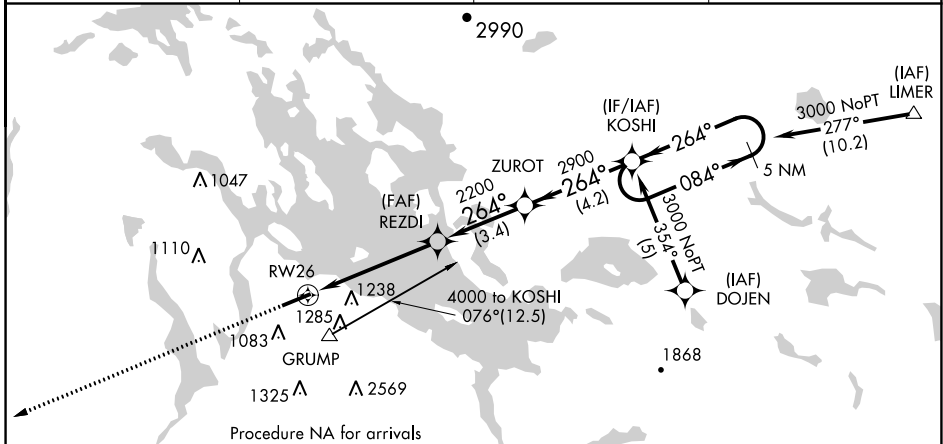
APP CRS	Rwy Idg	5286
264°	TDZE	533
	Apt Elev	545

RNAV (GPS) RWY 26

LAONIA MUNI (LCI)

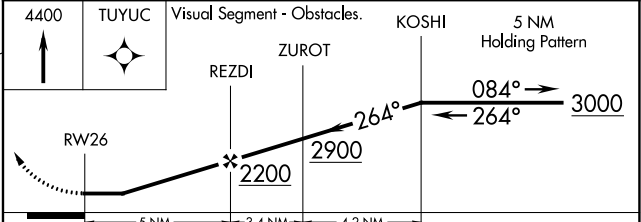
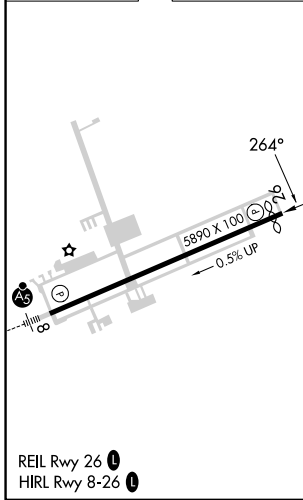
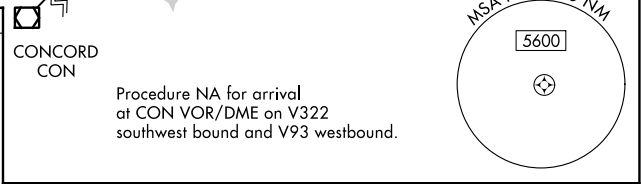
RNP APCH - GPS		MISSED APPROACH: Climb to 4400 direct TUYUC and hold, continue climb-in-hold to 4400.
<p>▼ Rwy 26 helicopter visibility reduction below 1 SM NA. If local altimeter setting not received, use Concord altimeter setting and increase all MDAs 80 feet. Circling NA south of Rwy 8-26.</p> <p>▲ Straight-in Rwy 26 NA at night, Circling Rwy 26 NA at night.</p>		

AWOS-3PT 133.525	BOSTON APP CON 134.75 254.25	CLNC DEL 119.85	UNICOM 123.0 (CTAF) 0
----------------------------	--	---------------------------	---------------------------------



Procedure NA for arrivals at GRUMP on V496 northwest bound and V322 southwest bound.

ELEV 545	D	TDZE 533
----------	----------	----------



CATEGORY	A	B	C	D
LNAV MDA	1420-1¼ 887 (900-1¼)	887 (900-1¼)	1420-2¾ 887 (900-2¾)	1420-3 887 (900-3)
C CIRCLING	1420-1¼ 875 (900-1¼)	1600-1½ 1055 (1100-1½)	2160-3 1615 (1700-3)	2860-3 2315 (2400-3)

NE-1, 11 JUL 2024 to 08 AUG 2024

NE-1, 11 JUL 2024 to 08 AUG 2024