

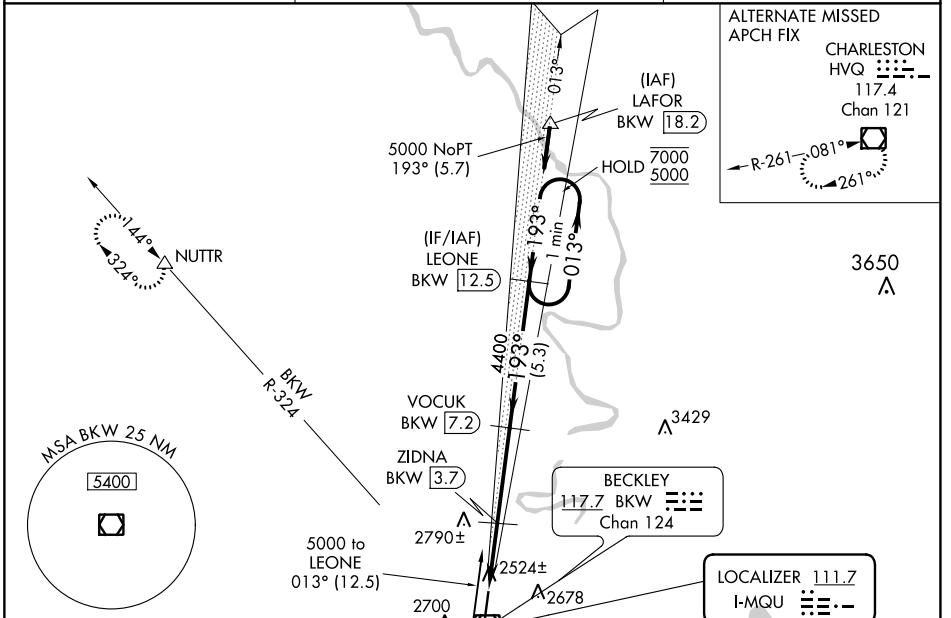
LOC I-MQU 111.7	APP CRS 193°	Rwy Idg 6750
		TDZE 2468
		Apt Elev 2504

ILS or LOC RWY 19

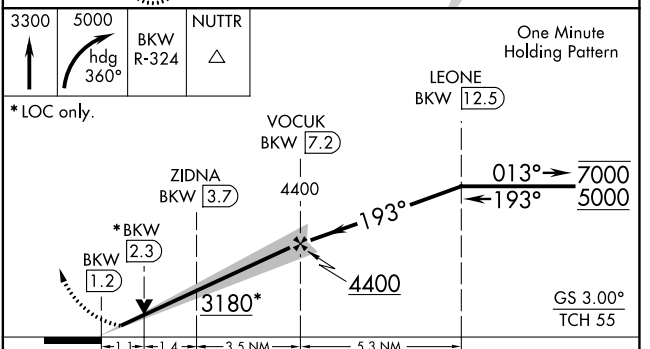
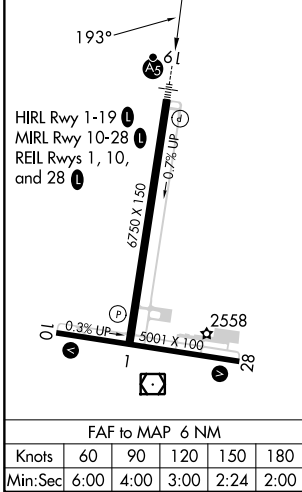
RALEIGH COUNTY MEML (BKW)

DME required.	MALSR	MISSED APPROACH: Climb to 3300 then climbing right turn to 5000 on heading 360° and BKW VOR/DME R-324 to NUTTR INT and hold.
---------------	-------	--

ASOS 121.55	CHARLESTON APP CON 125.4 269.125	UNICOM 123.0 (CTAF)
-----------------------	--	-------------------------------



ELEV 2504	D	TDZE 2468
-----------	----------	-----------



CATEGORY	A	B	C	D
S-ILS 19	2688-½ 220 (200-½)			
S-LOC 19	2860-½	392 (400-½)	2860-⅝	392 (400-⅝)
<input checked="" type="checkbox"/> CIRCLING	3120-1 616 (700-1)	3180-1 676 (700-1)	3320-2½ 816 (900-2½)	3500-3 996 (1000-3)

NE-4, 11 JUL 2024 to 08 AUG 2024

NE-4, 11 JUL 2024 to 08 AUG 2024