

APP CRS	Rwy Idg	<b>7000</b>
<b>342°</b>	TDZE	<b>4252</b>
	Apt Elev	<b>4252</b>

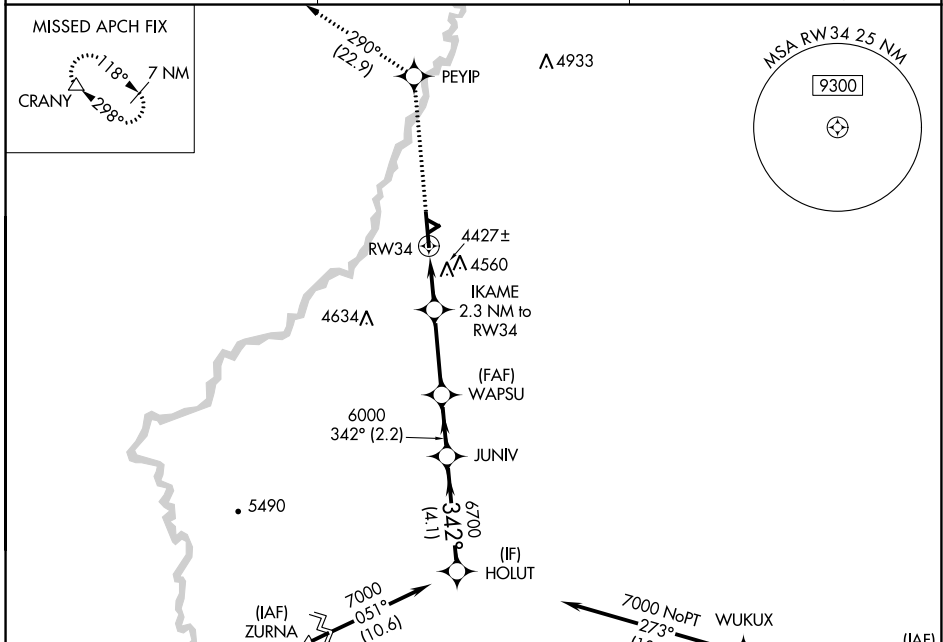
# RNAV (GPS) RWY 34

WORLAND MUNI (WRL)

**⚠** When local altimeter setting not received, use Greybull altimeter setting: increase all MDAs 140 feet; and LNAV all Cats, and Circling Cat C/D visibilities ½ SM. DME/DME RNP-0.3 NA. Helicopter visibility reduction below ¾ SM NA.

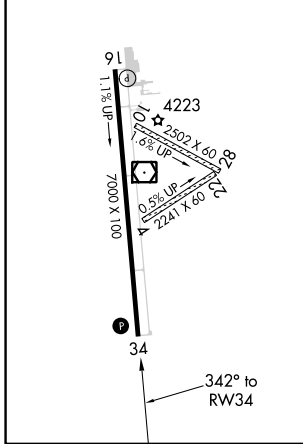
**⚠** MISSED APPROACH: Climb to 8500 direct PEYIP and on track 290° to CRANY and hold.

ASOS <b>135.475</b>	SALT LAKE CENTER <b>133.25 285.6</b>	UNICOM <b>123.05 (CTAF)</b>
------------------------	---	--------------------------------



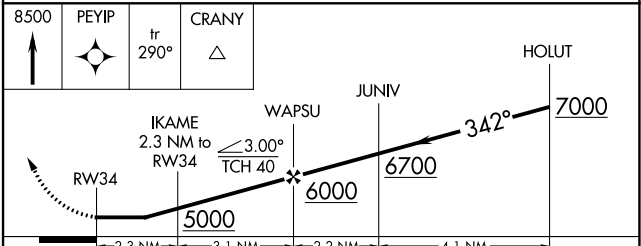
ELEV 4252	<b>D</b>	TDZE 4252
-----------	----------	-----------

REIL Rws 16 and 34 **⚠**  
MIRL Rwy 16-34 **⚠**



Procedure NA for arrivals at ZURNA on V319 southbound and at JIIP on V401 eastbound.

8500	PEYIP $\Delta$	tr 290°	CRANY $\Delta$
------	----------------	---------	----------------



CATEGORY	A	B	C	D
LNAV MDA	4680-1	428 (500-1)	4680-1 ¼	428 (500-1 ¼)
CIRCLING	4920-1	668 (700-1)	4920-1 ¾ 668 (700-1 ¾)	5020-2 ½ 768 (800-2 ½)

NW-1, 11 JUL 2024 to 08 AUG 2024

NW-1, 11 JUL 2024 to 08 AUG 2024