

WAAS CH <b>50144</b> <b>W02A</b>	APP CRS <b>018°</b>	Rwy Idg TDZE <b>152</b> Apt Elev <b>163</b>	<b>4502</b>
--	------------------------	---	-------------

# RNAV (GPS) RWY 2

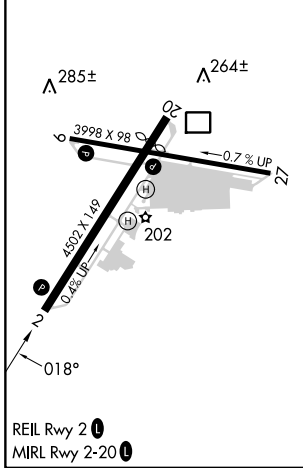
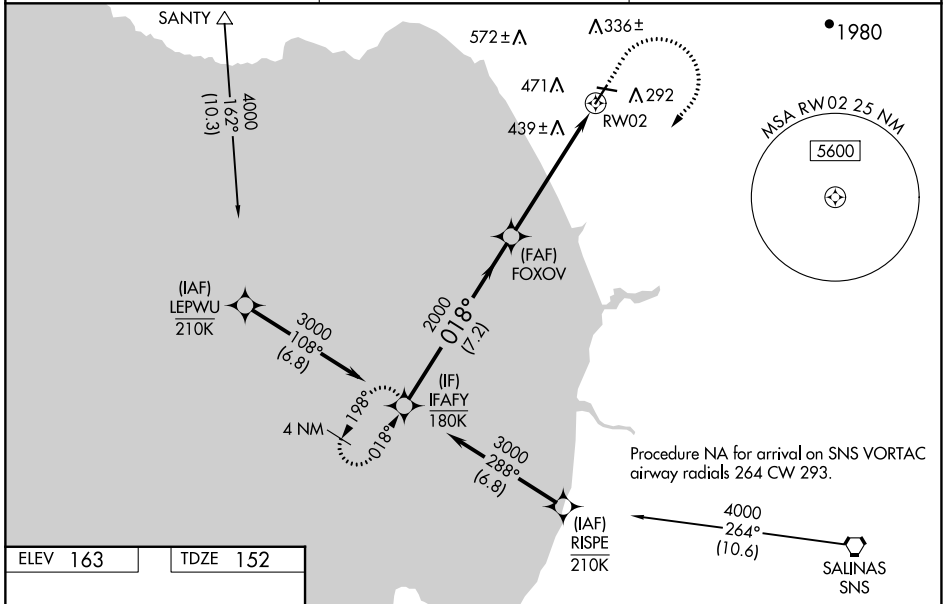
WATSONVILLE MUNI (WVI)

RNP APCH - GPS.

**⚠** Rwy 2 helicopter visibility reduction below ¼ SM NA. Circling Rwy 9, 27 NA at night. For uncompensated Baro-VNAV systems, LNAV/VNAV NA below 0°C or above 54°C. Circling NA west of Rwy 2-20. When local altimeter setting not received, use Monterey altimeter setting and increase LPV DA to 510 feet and all visibilities ½ SM. Increase LNAV/VNAV DA to 834 feet and all visibilities ¼ SM. Increase all MDAs 80 feet and LNAV visibility Cat C/D ½ SM, and Circling visibility Cat C ½ SM. Baro-VNAV and VDP NA when using Monterey altimeter setting.

MISSED APPROACH: (Do not exceed 200K until IFAFY) Climb to 740 then climbing right turn to 3000 direct IFAFY and hold, continue climb-in-hold to 3000.

ASOS <b>132.275</b>	NORCAL APP CON <b>127.15 307.125</b>	UNICOM <b>122.8 (CTAF) 0</b>
------------------------	---	---------------------------------



VGSI and RNAV glidepath not coincident (VGSI Angle 3.00/TCH 43).

IFAFY	FOXOV	740	3000	IFAFY
3000	2000	↑	↷	✦
GP 3.00°	2000	1.6 NM to RW02		
TCH 56	2000	7.2 NM	4.1 NM	1.6 NM
CATEGORY	A	B	C	D
LPV DA	448-7/8 296 (300-7/8)			
LNAV/VNAV DA	772-13/4 620 (700-13/4)			
LNAV MDA	700-1 548 (600-1)	700-15/8 548 (600-15/8)		
CIRCLING	700-1 537 (600-1)	700-15/8 537 (600-15/8)	1160-3 997 (1000-3)	

SW-2, 11 JUL 2024 to 08 AUG 2024

SW-2, 11 JUL 2024 to 08 AUG 2024