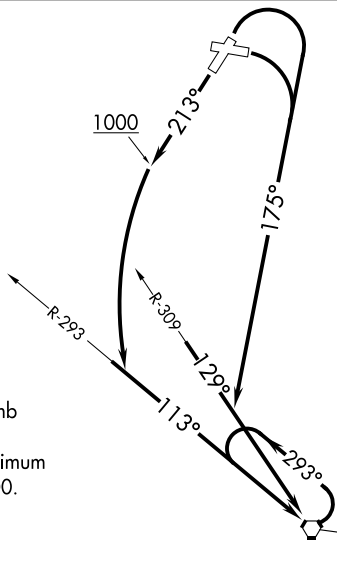


# WATSONVILLE FOUR DEPARTURE (OBSTACLE)

ASOS  
132.275  
NORCAL DEP CON  
127.15 307.125  
CTAF  
122.8

NOTE: Chart not to scale.



### TAKEOFF MINIMUMS

- Rwy 27: NA - Airport Obstacles.
- Rwy 20: Standard.
- Rwy 2: Standard with minimum climb of 500' per NM to 2600.
- Rwy 9: 300-1 or standard with minimum climb of 270' per NM to 400.

### TAKEOFF OBSTACLE NOTES

- Rwy 2: Lighting 8' from DER, 84' left of centerline, 1' AGL/159' MSL. Lighting 9' from DER, 84' right of centerline, 158' MSL. Pole 14' from DER, 349' left of centerline, 205' MSL. Pole, building, vehicles on road, tree and fence beginning 15' from DER, 322' left of centerline, up to 50' AGL/213' MSL. Trees beginning 278' from DER, 414' right of centerline, up to 188' MSL. Pole, vehicles on road, stack, tree and building beginning 429' from DER, 157' left of centerline, up to 58' AGL/220' MSL. Pole, building and tree beginning 808' from DER, 22' right of centerline, up to 40' AGL/198' MSL. Tree and transmission line beginning 1021' from DER, 137' right of centerline, up to 222' MSL. Pole 1174' from DER, 328' right of centerline, 57' AGL/224' MSL. Trees beginning 1275' from DER, 298' right of centerline, up to 242' MSL. Tree 1345' from DER, 320' left of centerline, 236' MSL. Tree 2249' from DER, 371' left of centerline, 264' MSL.
- Rwy 9: Tree and pole beginning 1' from DER, 152' left of centerline, up to 157' MSL. Pole 65' from DER, 301' right of centerline, 31' AGL/148' MSL. Tree, fence, building, vehicles on road and pole beginning 74' from DER, 251' left of centerline, up to 160' MSL. Pole, tree, building, tank and stack beginning 210' from DER, 139' left of centerline, up to 177' MSL. Pole 231' from DER, 250' right of centerline, 32' AGL/153' MSL. Trees beginning 312' from DER, 560' right of centerline, up to 173' MSL. Tower, pole and tree beginning 828' from DER, 136' left of centerline, up to 52' AGL/181' MSL. Trees beginning 915' from DER, 146' right of centerline, up to 197' MSL. Tree 1815' from DER, 365' left of centerline, 215' MSL. Tower 4697' from DER, 1365' right of centerline, 189' AGL/292' MSL.
- Rwy 20: Tree 57' from DER, 500' left of centerline, 153' MSL. Fence 57' from DER, 268' right of centerline, 7' AGL/143' MSL. Pole 95' from DER, 467' left of centerline, 175' MSL. Pole, vehicles on road and tree beginning 96' from DER, 377' left of centerline, up to 50' AGL/183' MSL. Transmission line 848' from DER, 505' left of centerline, 44' AGL/184' MSL. Tree and transmission line beginning 919' from DER, 520' left of centerline, up to 190' MSL. Tree 1153' from DER, 286' right of centerline, 169' MSL. Tree 1207' from DER, 615' left of centerline, 197' MSL. Tree, building and transmission line beginning 1267' from DER, 318' left of centerline, up to 203' MSL. Tree 1336' from DER, 7' right of centerline, 177' MSL. Tree 1337' from DER, 46' right of centerline, 192' MSL. Tree 2201' from DER, 776' right of centerline, 240' MSL.

### DEPARTURE ROUTE DESCRIPTION

TAKEOFF RUNWAYS 2 and 9: Climbing right turn on heading 175° to intercept SNS VORTAC R-309 to SNS VORTAC, thence . . . .

TAKEOFF RUNWAY 20: Climb heading 213° to 1000, then climbing left turn to intercept SNS VORTAC R-293 to SNS VORTAC, thence . . . .

. . . . continue climb in SNS holding pattern to cross SNS VORTAC at or above MEA/MCA for route of flight.

SW-2, 11 JUL 2024 to 08 AUG 2024

SW-2, 11 JUL 2024 to 08 AUG 2024