

(LBY2.LBY) 24025

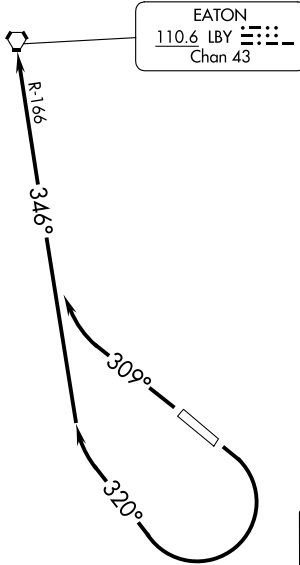
AL-853 (FAA)

HATTIESBURG BOBBY L CHAIN MUNI (HBG)  
HATTIESBURG, MISSISSIPPI

# EATON TWO DEPARTURE

ASOS 135.425  
HOUSTON CENTER  
126.8 327.8  
CTAF 122.8

**TOP ALTITUDE:  
3000**



**TAKEOFF MINIMUMS:**

Rwy 13: ATC climb of 300' per NM to 600.

Rwy 13: Do not exceed 230K until established on heading 320°.

Rwy 31: Standard.

NOTE: Chart not to scale.

SC-4, 11 JUL 2024 to 08 AUG 2024

SC-4, 11 JUL 2024 to 08 AUG 2024



## DEPARTURE ROUTE DESCRIPTION

TAKEOFF RUNWAY 13: Climbing right turn heading 320° and LBY VORTAC R-166 to LBY VORTAC. Thence. . . .

TAKEOFF RUNWAY 31: Climb heading 309° and LBY VORTAC R-166 to LBY VORTAC. Thence. . . .

. . . .maintain 3000 or ATC assigned altitude. Expect clearance to filed altitude 10 minutes after departure.

# EATON TWO DEPARTURE

(LBY2.LBY) 21JUL16

HATTIESBURG, MISSISSIPPI  
HATTIESBURG BOBBY L CHAIN MUNI (HBG)