

LOM TU <b>420</b>	APP CRS <b>001°</b>	Rwy Idg <b>7150</b>
		TDZE <b>347</b>
		Apt Elev <b>347</b>

# NDB RWY 36

TUPELO RGNL (TUP)

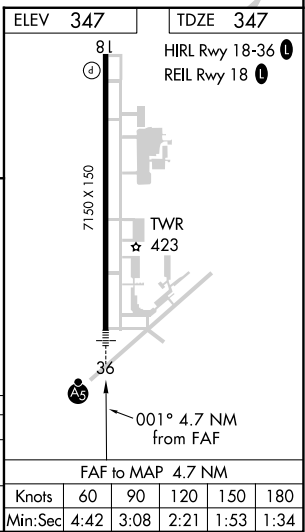
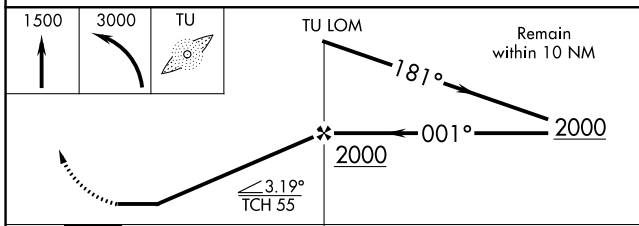
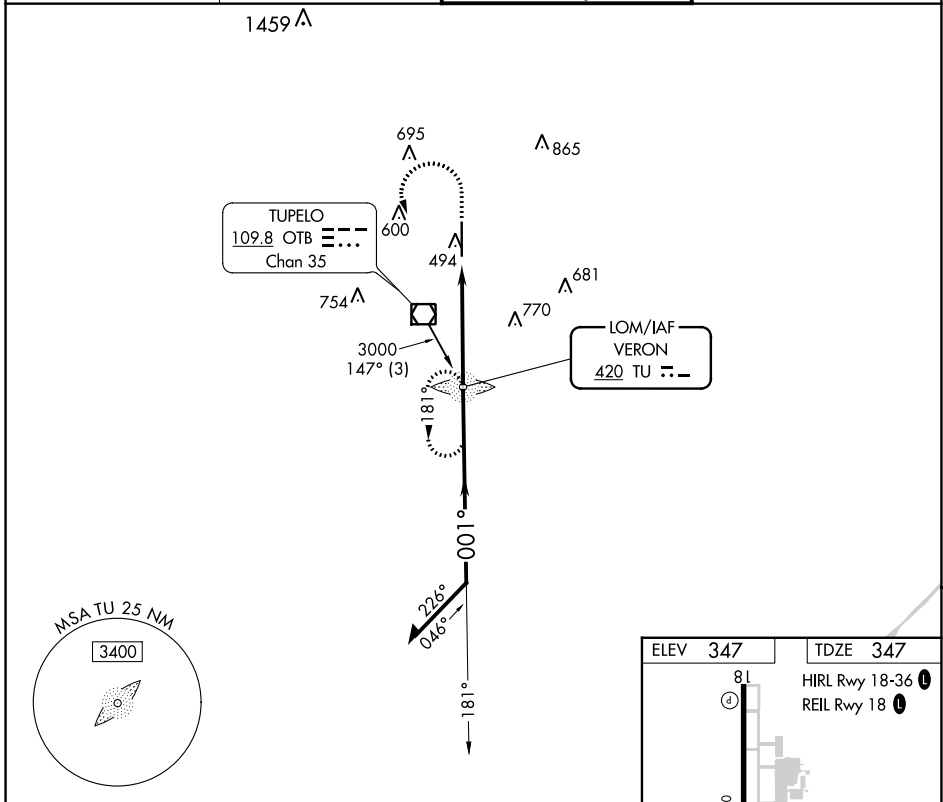
**▼** When local altimeter setting not received, use Columbus AFB altimeter setting and increase all MDA 120 feet, increase S-36 Cats C and D visibility 3/8 SM and increase all MDA 120 feet, increase S-36 Cats C and D visibility 3/8 SM and Circling Cats C and D 1/2 SM. For inop ALS, increase S-36 Cat A and B visibility to 1 SM and Cat C and D to 1 3/8 SM. For inop ALS when using Columbus AFB altimeter setting, increase S-36 Cat A and B visibility to 1 SM and Cat C and D to 1 3/4 SM.

**▲ NA**



**MISSED APPROACH:**  
Climb to 1500 then climbing left turn to 3000 direct TU LOM and hold.

ASOS <b>133.525</b>	MEMPHIS CENTER <b>128.5 279.55</b>	TUPELO TOWER ★ <b>118.775 (CTAF) 254.275</b>	GND CON <b>121.825 254.275</b>
------------------------	---------------------------------------	---	-----------------------------------



CATEGORY	A	B	C	D
S-36	840-3/4 493 (500-3/4)		840-1 493 (500-1)	
CIRCLING	840-1 493 (500-1)		900-1 1/2 553 (600-1 1/2)	1140-2 1/2 793 (800-2 1/2)

SC-4, 11 JUL 2024 to 08 AUG 2024

SC-4, 11 JUL 2024 to 08 AUG 2024