

WAAS CH <b>61305</b> <b>W35A</b>	APP CRS <b>356°</b>	Rwy Idg <b>6201</b> TDZE <b>712</b> Apt Elev <b>717</b>
--	------------------------	---

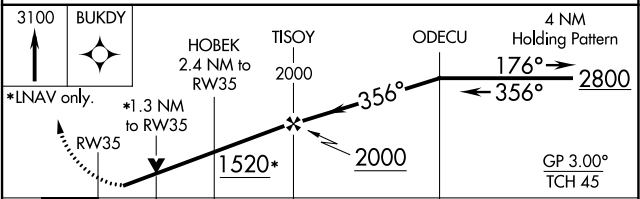
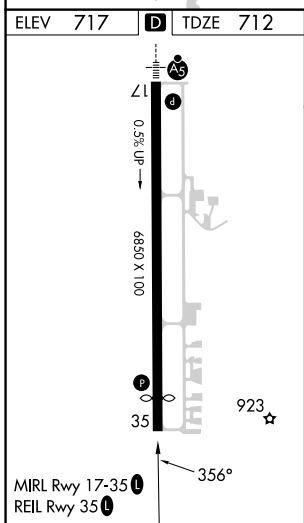
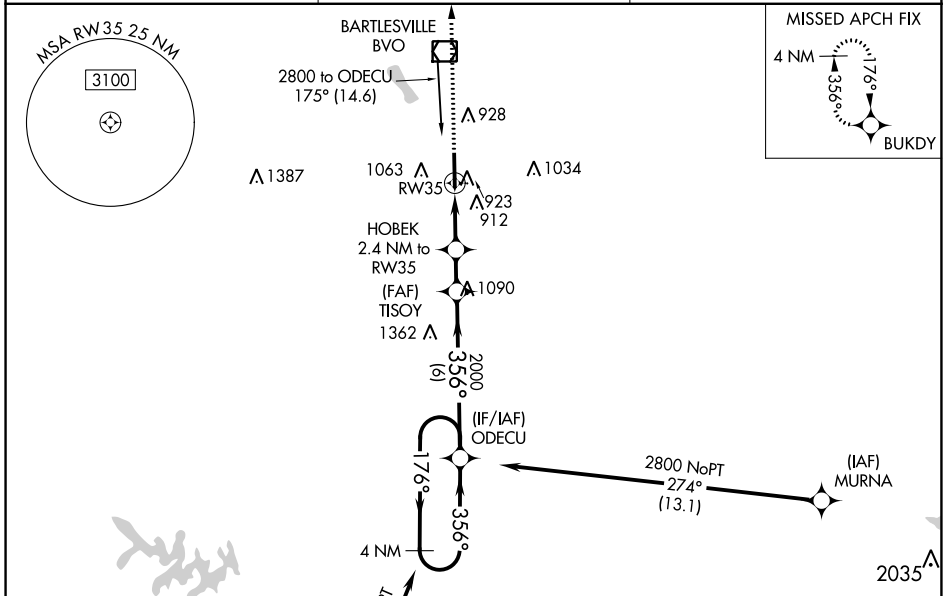
# RNAV (GPS) RWY 35

BARTLESVILLE MUNI (BVO)

**⚠** For uncompensated Baro-VNAV systems, LNAV/VNAV NA below -18°C (0°F) or above 54°C (130°F).  
**⚠** DME/DME RNP-0.3 NA. When local altimeter setting not received, use Tulsa Intl altimeter setting and increase all DA 85 feet and all MDA 100 feet, increase LPV all Cats visibility ¼ mile, LNAV/VNAV all Cats visibility ⅜ mile, LNAV and Circling Cat C visibility ¼ mile. Circling NA east of Rwy 17-35. Baro-VNAV and VDP NA when using Tulsa Intl altimeter setting. Helicopter visibility reduction below ¾ SM NA.

**MISSED APPROACH:**  
Climb to 3100 direct BUKDY and hold.

ASOS <b>132.675</b>	KANSAS CITY CENTER <b>128.6 282.325</b>	CTAF <b>122.825</b>
------------------------	--	------------------------



CATEGORY	A	B	C	D
LPV DA	968-7/8	256 (300-7/8)		NA
LNAV/VNAV DA	1161-1 1/2	449 (500-1 1/2)		NA
LNAV MDA	1180-1	468 (500-1)	1180-3/8 468 (500-1 3/8)	NA
CIRCLING	1380-1	663 (700-1)	1400-2 683 (700-2)	NA

SC-1, 11 JUL 2024 to 08 AUG 2024

SC-1, 11 JUL 2024 to 08 AUG 2024