

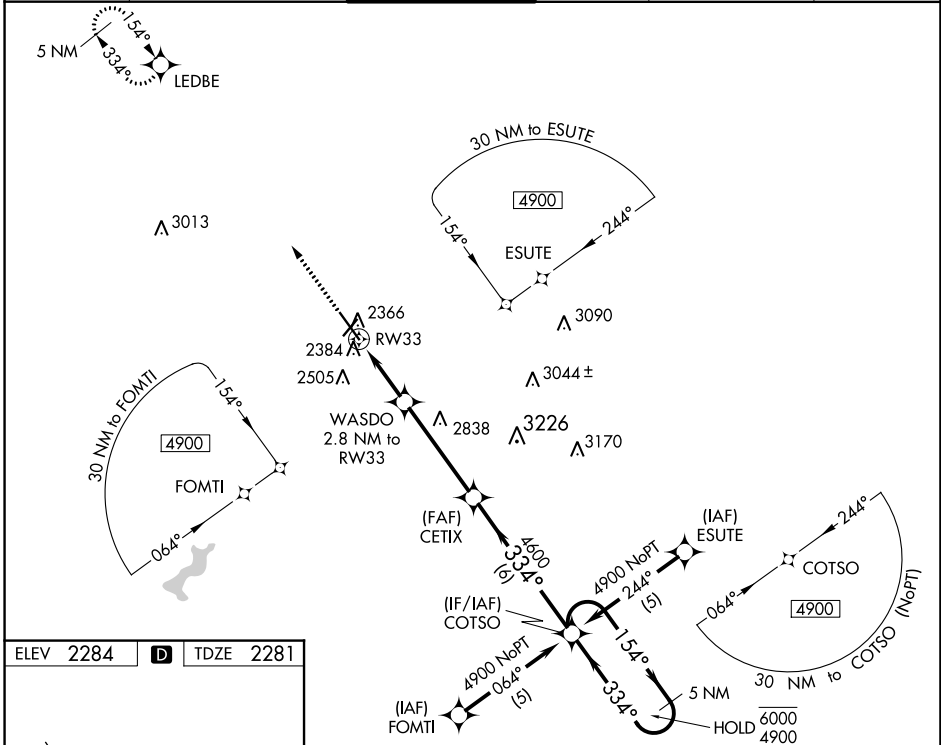
WAAS CH <b>61113</b> <b>W33A</b>	APP CRS <b>334°</b>	Rwy Idg TDZE Apt Elev	<b>6484</b> <b>2281</b> <b>2284</b>
--	------------------------	-----------------------------	---

# RNAV (GPS) RWY 33

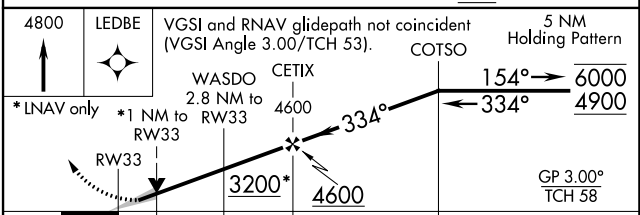
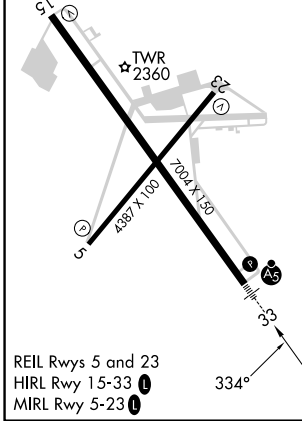
JOHN MURTHA JOHNSTOWN/CAMBRIA COUNTY (JST)

RNP APCH.	MALSR	MISSED APPROACH: Climb to 4800 direct LEDBE and hold.
-----------	-------	---

ATIS <b>118.325</b>	JOHNSTOWN APP CON ★ <b>121.2 299.2</b>	JOHNSTOWN TOWER ★ <b>125.75 (CTAF) 0</b>	GND CON <b>121.6</b>	CLNC DEL <b>126.85 235.775</b>	UNICOM <b>122.95</b>
------------------------	---	---	-------------------------	-----------------------------------	-------------------------



ELEV 2284	<b>D</b>	TDZE 2281
-----------	----------	-----------



CATEGORY	A	B	C	D
LPV DA	2481-1/2		200 (200-1/2)	
LNAV/VNAV DA	2552-1/2		271 (300-1/2)	
LNAV MDA	2640-1/2	359 (400-1/2)	2640-5/8 359 (400-5/8)	2640-1 359 (400-1)
<b>C</b> CIRCLING	2700-1 416 (500-1)	2880-1 596 (600-1)	2880-1 1/2 596 (600-1 1/2)	3000-2 1/4 716 (800-2 1/4)

# RNAV (GPS) RWY 33

NE-4, 11 JUL 2024 to 08 AUG 2024

NE-4, 11 JUL 2024 to 08 AUG 2024