

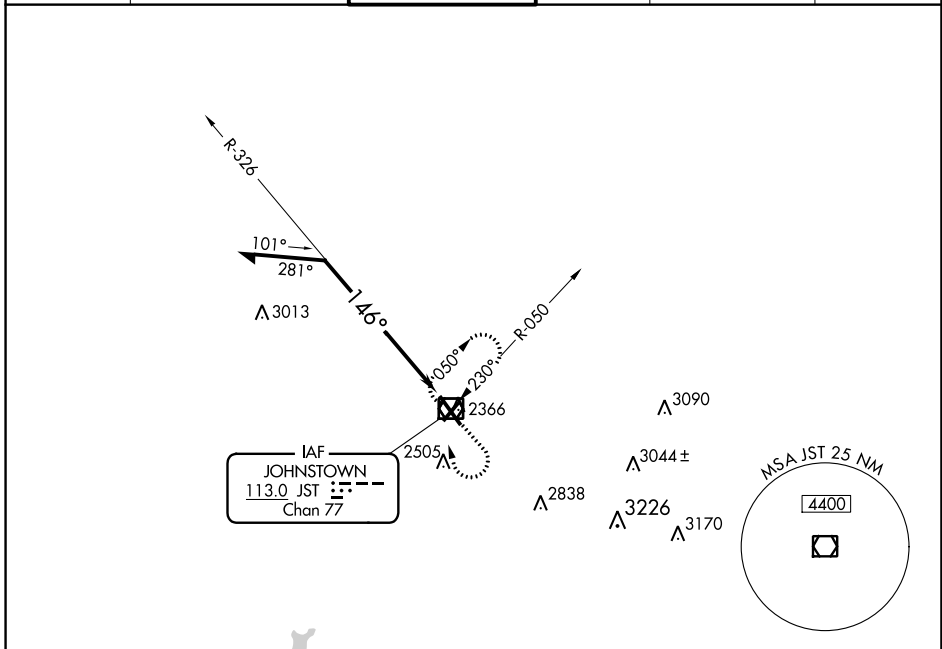
VOR/DME JST <b>113.0</b> Chan 77	APP CRS <b>146°</b>	Rwy Idg TDZE Apt Elev <b>6698</b> <b>2276</b> <b>2284</b>
--	------------------------	--

# VOR Y RWY 15

JOHN MURTHA JOHNSTOWN/CAMBRIA COUNTY (JST)

		MISSED APPROACH: Climb to 4300 then right turn direct JST VOR/DME and hold.			
--	--	---	--	--	--

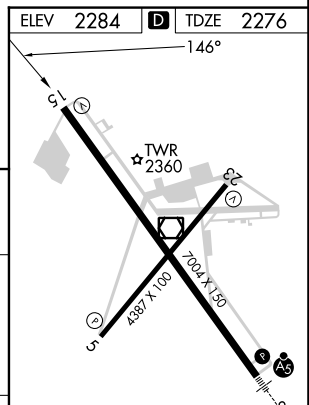
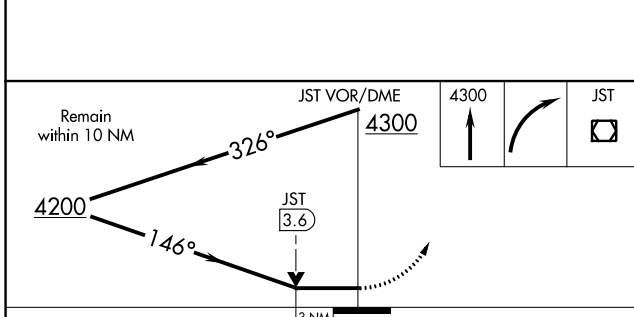
ATIS <b>118.325</b>	JOHNSTOWN APP CON ★ <b>121.2 299.2</b>	JOHNSTOWN TOWER ★ <b>125.75 (CTAF) 0</b>	GND CON <b>121.6</b>	CLNC DEL <b>126.85 235.775</b>	UNICOM <b>122.95</b>
------------------------	---	---	-------------------------	-----------------------------------	-------------------------



NE-4, 11 JUL 2024 to 08 AUG 2024

NE-4, 11 JUL 2024 to 08 AUG 2024

ELEV 2284	<b>D</b> TDZE 2276
-----------	--------------------



CATEGORY	A	B	C	D
S-15	3300-1¼ 1024 (1100-1¼)	3300-1½ 1024 (1100-1½)	3300-3	1024 (1100-3)
<b>C</b> CIRCLING	3300-1¼ 1016 (1100-1¼)	3300-1½ 1016 (1100-1½)	3300-3	1016 (1100-3)

REIL Rwy 5 and 23  
HIRL Rwy 15-33 **0**  
MIRL Rwy 5-23 **0**

# VOR Y RWY 15