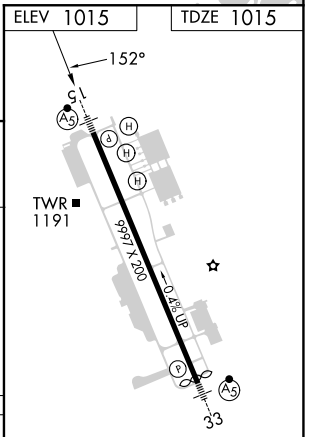
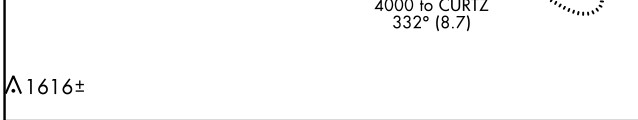
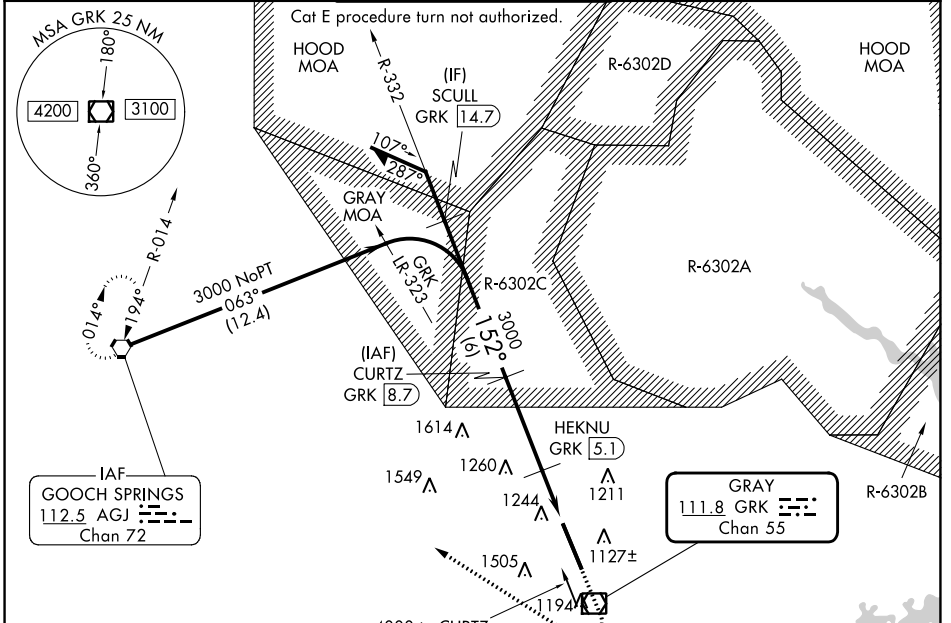


VOR/DME GRK	APP CRS	Rwy Idg	9997
111.8	152°	TDZE	1015
Chan 55		Apt Elev	1015

VOR RWY 15

ROBERT GRAY AAF (GRK)

DME required.		MALSR	MISSED APPROACH: Climb to 2000 then climbing right turn to 3000 direct AGJ VORTAC and hold.	
NA ASR/PAR Circling NA west of Rws 15 and 33. For inop ALS, increase S-15 Cat E visibility to 1% SM.		MALSR		
ATIS	GRAY APP CON	GRAY TOWER	GND CON	CLNC DEL
124.9	120.075 323.15	120.75(CTAF) 285.5	121.8 279.5	126.2 251.1



	2000	3000	AGJ
	↑	↷	◻

CATEGORY	A	B	C	D	E	HIRL Rwy 15-33												
S-15	1560/24	545 (600-1/2)	1560/60	545 (600-1 1/4)		FAF to MAP 5.7 NM												
CIRCLING	1560-1	545 (600-1)	1560-1 5/8 545 (600-1 5/8)	1620-2 605 (700-2)	1740-2 1/2 725 (800-2 1/2)	<table border="1"> <tr> <td>Knots</td> <td>60</td> <td>90</td> <td>120</td> <td>150</td> <td>180</td> </tr> <tr> <td>Min:Sec</td> <td>5:42</td> <td>3:48</td> <td>2:51</td> <td>2:17</td> <td>1:54</td> </tr> </table>	Knots	60	90	120	150	180	Min:Sec	5:42	3:48	2:51	2:17	1:54
Knots	60	90	120	150	180													
Min:Sec	5:42	3:48	2:51	2:17	1:54													

SC-3, 11 JUL 2024 to 08 AUG 2024

SC-3, 11 JUL 2024 to 08 AUG 2024