

TACAN Y RWY 5R

TACAN NTU Chan 113	APCH CRS 043°	Rwy Idg TDZE Arprt Elev	12,001 19 22
-----------------------	-------------------------	-------------------------------	---

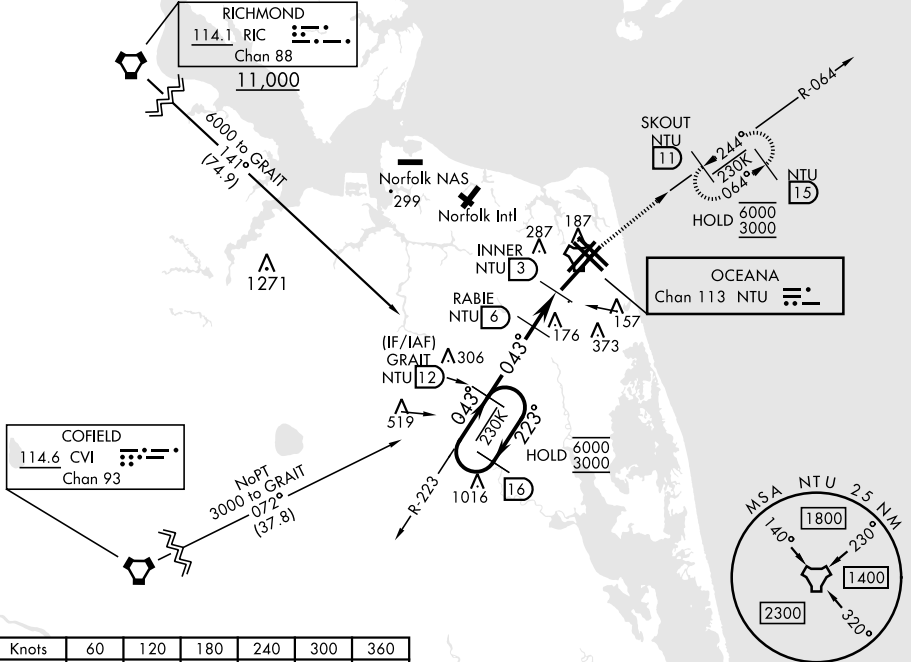
AL-934 [USN] OCEANA NAS (APOLLO SOUCEK FLD) (KNTU)

ALSF-1

 MISSED APPROACH: Climb to 3000 via R-223 to NTU TACAN and via R-064 to SKOUT and hold.

ATIS 317.6	APP/DEP CON 123.9 266.8	TOWER 127.075 360.2	GND CON 119.6 336.4	CLNC DEL 254.4	ASR/ PAR
----------------------	-----------------------------------	-------------------------------	-------------------------------	--------------------------	-------------

CAUTION: Final approach course 72° from rwy cntrln at 3000' from thld.



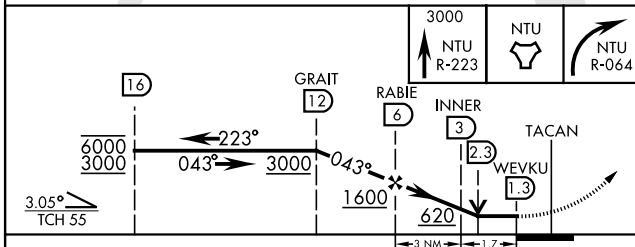
NE-3, 11 JUL 2024 to 08 AUG 2024

NE-3, 11 JUL 2024 to 08 AUG 2024

Knots	60	120	180	240	300	360
V/V(fpm)	210	420	630	840	1050	1260

Min climb of 210 ft/NM to 3000 - Controlling Obstacle Unk

EMERG SAFE ALT 100 NM 4100



CATEGORY	A	B	C	D
S-5R *	420-1/2	401 (400-1/2)	420-3/4 401 (400-3/4)	
CIRCLING	500-1	478 (500-1)	600-1 578 (600-1/2)	600-2 578 (600-2)

ELEV 22	TDZE 19
---------	---------

HIRL all rwy's
Wave-Off Lgt all rwy's

TACAN Y RWY 5R