

LOS ALAMITOS, CALIFORNIA

RNAV (GPS) RWY 22L

| | | |
|----------|------------|------|
| APCH CRS | Rwy Idg | 8001 |
| 223° | TDZE | 35 |
| | Arprt Elev | 35 |

-(USA)

LOS ALAMITOS AAF (KSLI)

RNP APCH- GPS

SALS MISSED APPROACH: Climb to 600 then climbing left turn to 2100 direct ALBAS and hold.

▼ * When ALS inop, increase CAT CD vis to 1 1/8 miles.
 ** When ALS inop, using John Wayne/Orange County altimeter setting, increase CAT CD vis to 1 1/4 miles.

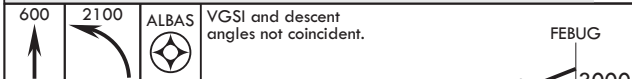
| | | | |
|-----------------|-----------------------|----------------------|---------------|
| ATIS* | SOCAL APP CON/DEP CON | TOWER* | GND CON |
| 118.875 379.975 | 125.35 316.125 | 123.85 (CTAF) 251.15 | 126.95 257.95 |

*** Circling not authorized N of Rwy 4L-22R. Circling not authorized to Rwy 4R at night.

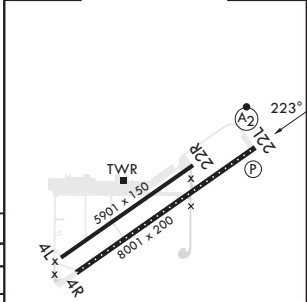
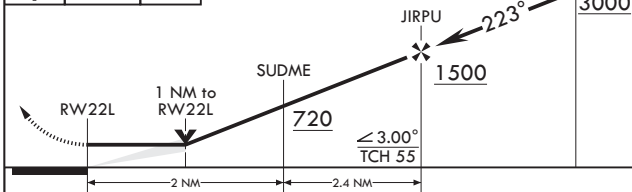
When local altimeter setting not received, use John Wayne/Orange County altimeter setting.

VDP not authorized when using John Wayne/Orange County altimeter setting.

Procedure NA for arrivals on POM VORTAC airway R-112 CW R-254.



| | |
|---------|---------|
| ELEV 35 | TDZE 35 |
|---------|---------|



| CATEGORY | A | B | C | D |
|---|----------------------|----------------------|------------------------|----------------------|
| LNAV MDA* | 420-1 384 (400-1) | | | |
| C CIRCLING*** | 440-1 404 (500-1) | 500-1 464 (500-1) | 600-1½ 564 (600-1½) | 600-2 564 (600-2) |
| JOHN WAYNE/ORANGE COUNTY ALTIMETER SETTING MINIMUMS | | | | |
| LNAV MDA** | 460-1 424 (500-1) | | | |
| C CIRCLING*** | 480-1 444 (500-1) | 540-1 504 (600-1) | 640-1¼ 604 (700-1¼) | 640-2 604 (700-2) |

HIRL Rwy 4R-22L
 MIRL Rwy 4L-22R
 REIL Rwy 22L

LOS ALAMITOS, CALIFORNIA

33°47'N - 118°03'W

LOS ALAMITOS AAF (KSLI)

Amdt 2 11JUL24

RNAV (GPS) RWY 22L

SW-3, 11 JUL 2024 to 08 AUG 2024

SW-3, 11 JUL 2024 to 08 AUG 2024