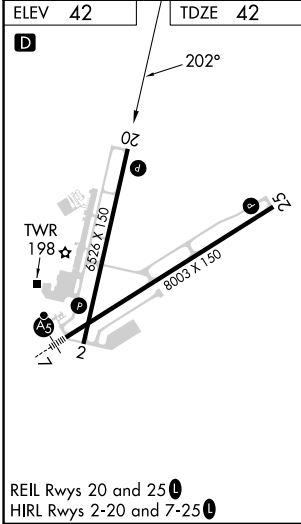
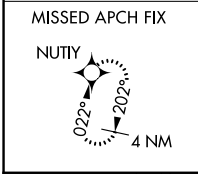
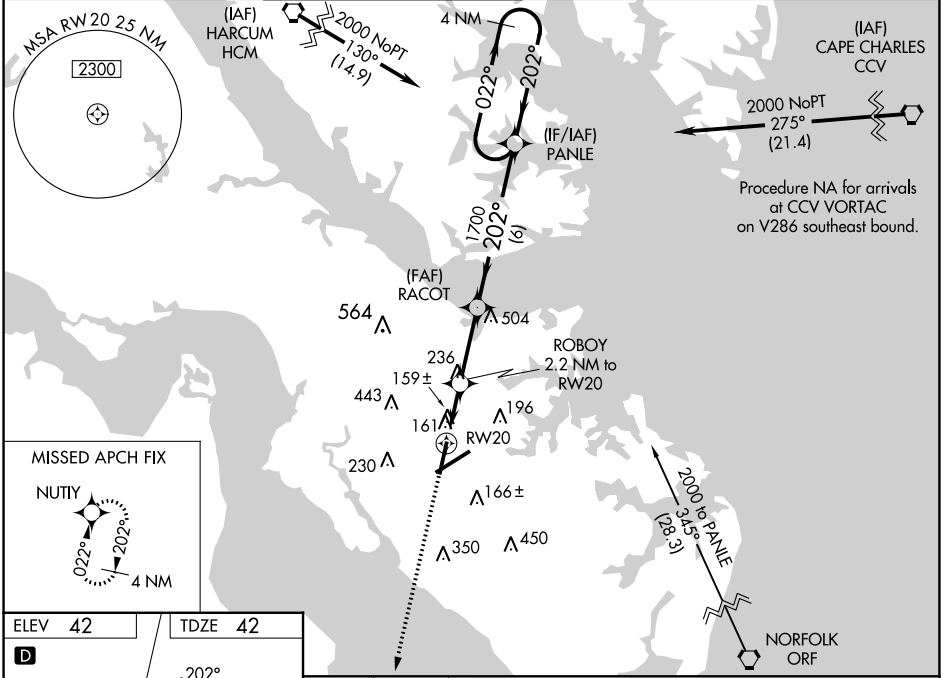


WAAS CH 97420 W20A	APP CRS 202°	Rwy Idg TDZE Apt Elev	6526 42 42
--	------------------------	-----------------------------	---------------------------------------

RNAV (GPS) RWY 20
NEWPORT NEWS/WILLIAMSBURG INTL (PHF)

RNP APCH. ▼ For uncompensated Baro-VNAV systems, LNAV/VNAV NA below -11°C or above 54°C. ▲ Rwy 20 helicopter visibility reduction below ¾ SM NA.		MISSED APPROACH: Climb to 2300 direct NUTY and hold.			
ATIS 128.65	NORFOLK APP CON 125.7 335.625	NEWPORT NEWS TOWER ★ 118.7(CTAF) 0 257.9	GND CON 121.9 348.6	CLNC DEL 121.65 225.4	UNICOM 122.95



ELEV 42	TDZE 42				
2300 NUTY	RACOT 1700	PANLE 4 NM Holding Pattern			
*LNAV only	*1.1 NM to RW20	*780	1700	2000	GP 3.00° TCH 42
1.1 NM	1.1 NM	2.8 NM	6 NM		
CATEGORY	A	B	C	D	
LPV DA	379-1⅛		337 (400-1⅛)		
LNAV/VNAV DA	474-1½		432 (500-1½)		
LNAV MDA	440-1	398 (400-1)	440-1⅛	398 (400-1⅛)	
CIRCLING	520-1 478 (500-1)	540-1 498 (500-1)	760-2 718 (800-2)	780-2¼ 738 (800-2¼)	

REIL Rws 20 and 25
HIRL Rws 2-20 and 7-25

NEWPORT NEWS/WILLIAMSBURG INTL (PHF)
37°08'N-76°30'W
RNAV (GPS) RWY 20

NE-3, 11 JUL 2024 to 08 AUG 2024

NE-3, 11 JUL 2024 to 08 AUG 2024