

APP CRS	Rwy Idg	4004
276°	TDZE	392
	Apt Elev	393

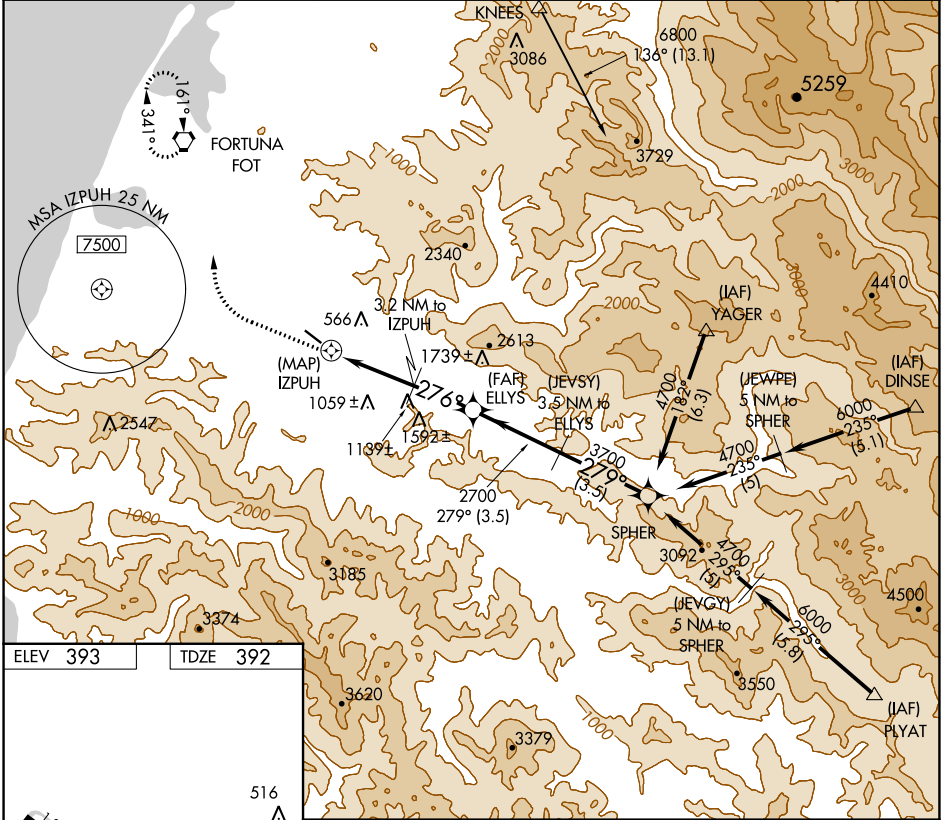
GPS RWY 29

ROHNERVILLE (FOT)

NA When local altimeter setting not received, use Arcata altimeter setting. Circling NA for Cat D north of Rwy 11-29.

MISSED APPROACH: Climb to 1500 then climbing right turn to 3000 direct FOT VORTAC and hold.

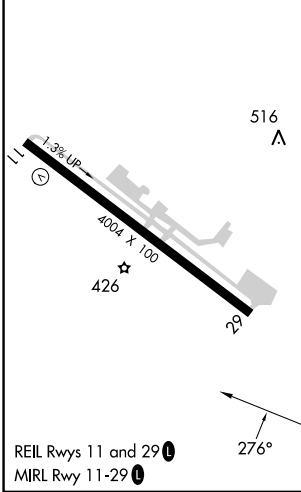
AWOS-3 133.8	SEATTLE CENTER 124.85 306.3	CTAF 122.9
------------------------	---------------------------------------	----------------------



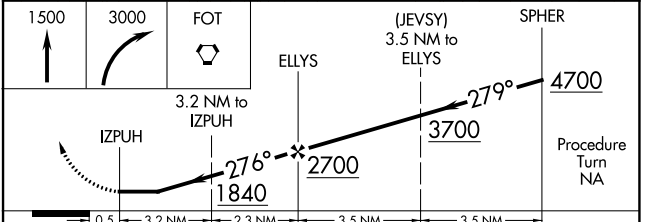
SW-2, 11 JUL 2024 to 08 AUG 2024

SW-2, 11 JUL 2024 to 08 AUG 2024

ELEV 393	TDZE 392
----------	----------



REIL Rws 11 and 29
MIRL Rwy 11-29



CATEGORY	A	B	C	D
S-29	1160-1 768 (800-1)	1160-1¼ 768 (800-1¼)	1160-2¼ 768 (800-2¼)	1160-2½ 768 (800-2½)
CIRCLING	1160-1 767 (800-1)	1360-1½ 967 (1000-1½)	1720-3 1327 (1400-3)	1780-3 1387 (1400-3)

FORTUNA, CALIFORNIA
Orig-B 09SEP21

40°33'N-124°08'W

ROHNERVILLE (FOT)

GPS RWY 29